



INTERIOR CATALOGUE

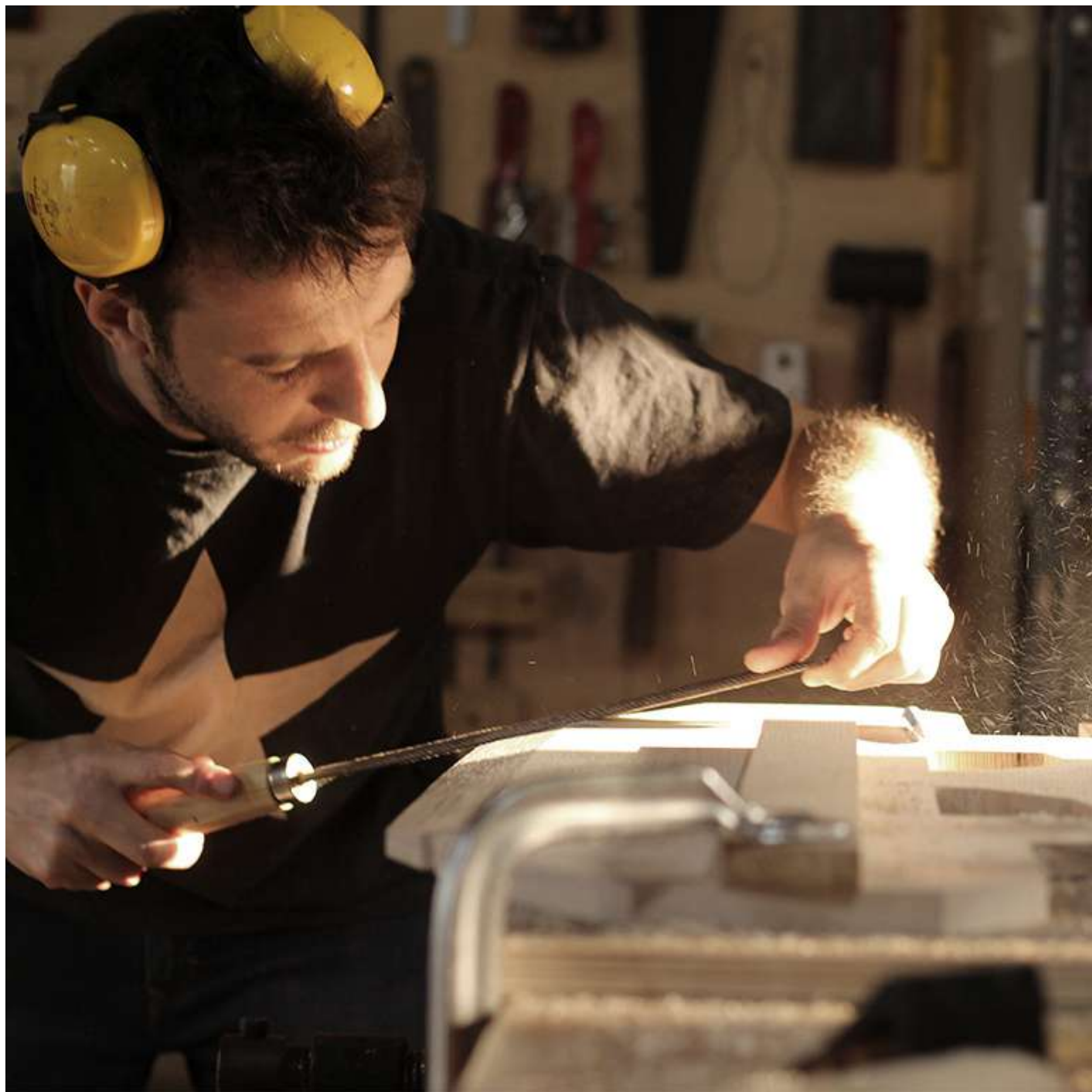
2024



BRAM WOODCRAFTING STUDIO.

EDITION NO-1
Published in 2024

BRAM WOODCRAFTING STUDIO PVT LTD
13/22, Mysuru - Hunsuru road, Belavadi, Industrial area, Mysuru,
570018 | info@woodcraftingstudio.in



"In 2017, when we launched BWS specializing in standalone furniture, our primary vision was to collaborate closely with architects to bring their designs to life. With over 20 years of experience working alongside architects, I've been thrilled to witness the exciting evolution in India where artisans are exploring timber and a wide array of materials.

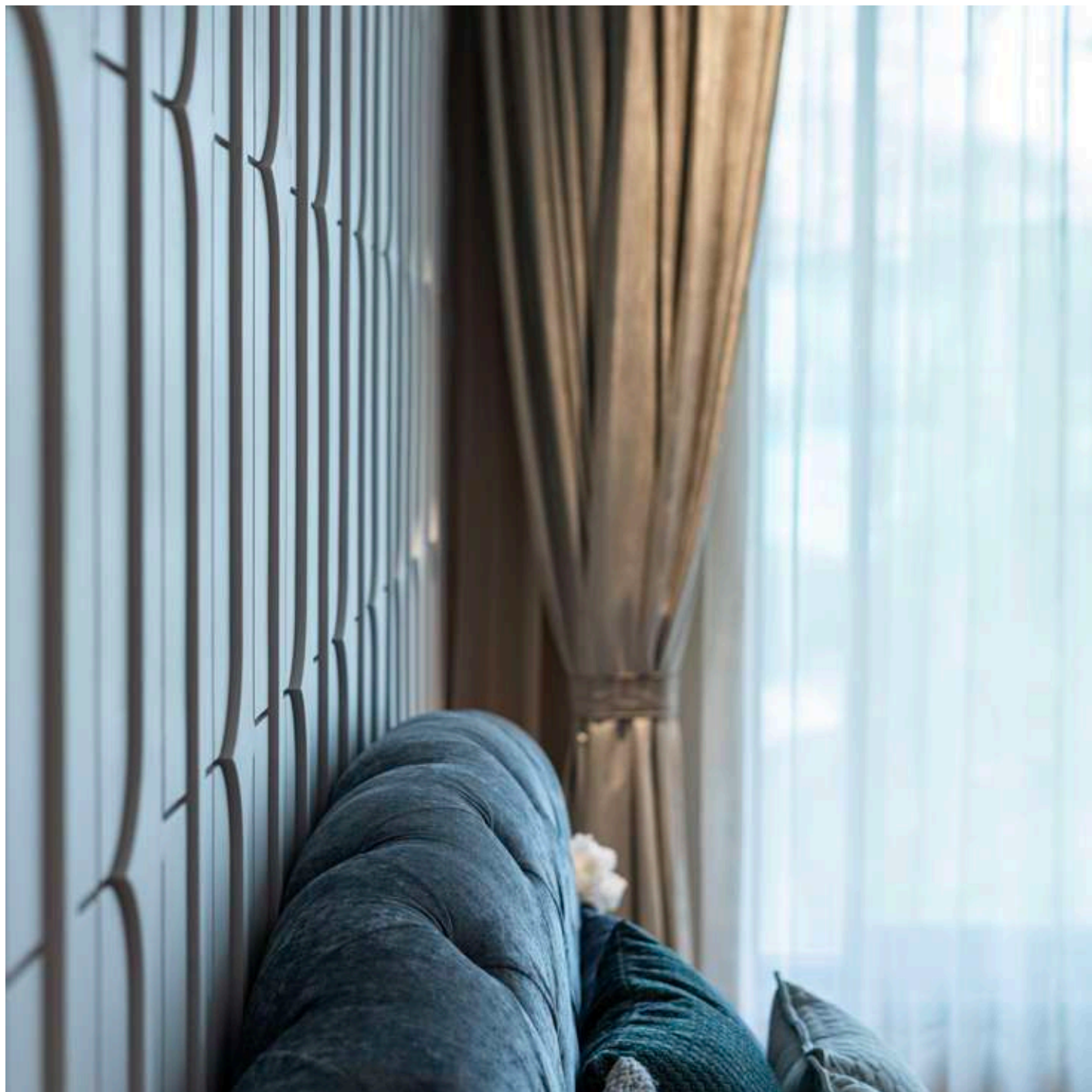
We view architects as the advocates of craftsmanship, playing a crucial role in translating our skills to clients. Our commitment to architects has always centered on trust: delivering their designs with utmost fidelity while honoring the intended aesthetics and structural integrity.

Each design presents multiple execution possibilities. We optimize section sizes, exploring combinations of metal, wood, and composite processed materials. Our structured processes guide us towards realizing the architect's vision faithfully.

The journey starts with geometry, refining joinery and profiles to streamline construction. Clear communication and meticulous planning with architects, understanding on-site dynamics, are integral to our approach. We believe that minimal disruption on-site signifies progress. Our factory-made interiors minimize on-site surprises, ensuring precise execution and quality control.

At BWS, we strive to redefine woodworking boundaries. Through our collaborative process with architects, we aim for the optimal realization of design excellence."

Bram Rouws



About us

Through the Interior department, Woodcrafting.in works with other designers and architects to modify spaces and bring their architectural and interior design elements to life. The products taken care of under this department include installations, staircases, wall paneling and in-built furniture. The Design team works closely with the Architect and Designer to ensure that the integrity of the design is maintained. We take care of the process end-to-end, from the detailed drawings to the execution on site.

I N D E X

PROJECTS	PAGE NO
PROJECT 01	11
PROJECT 02	51
PROJECT 03	73
PROJECT 04	111
OTHER PROJECT	137



PROJECT 01

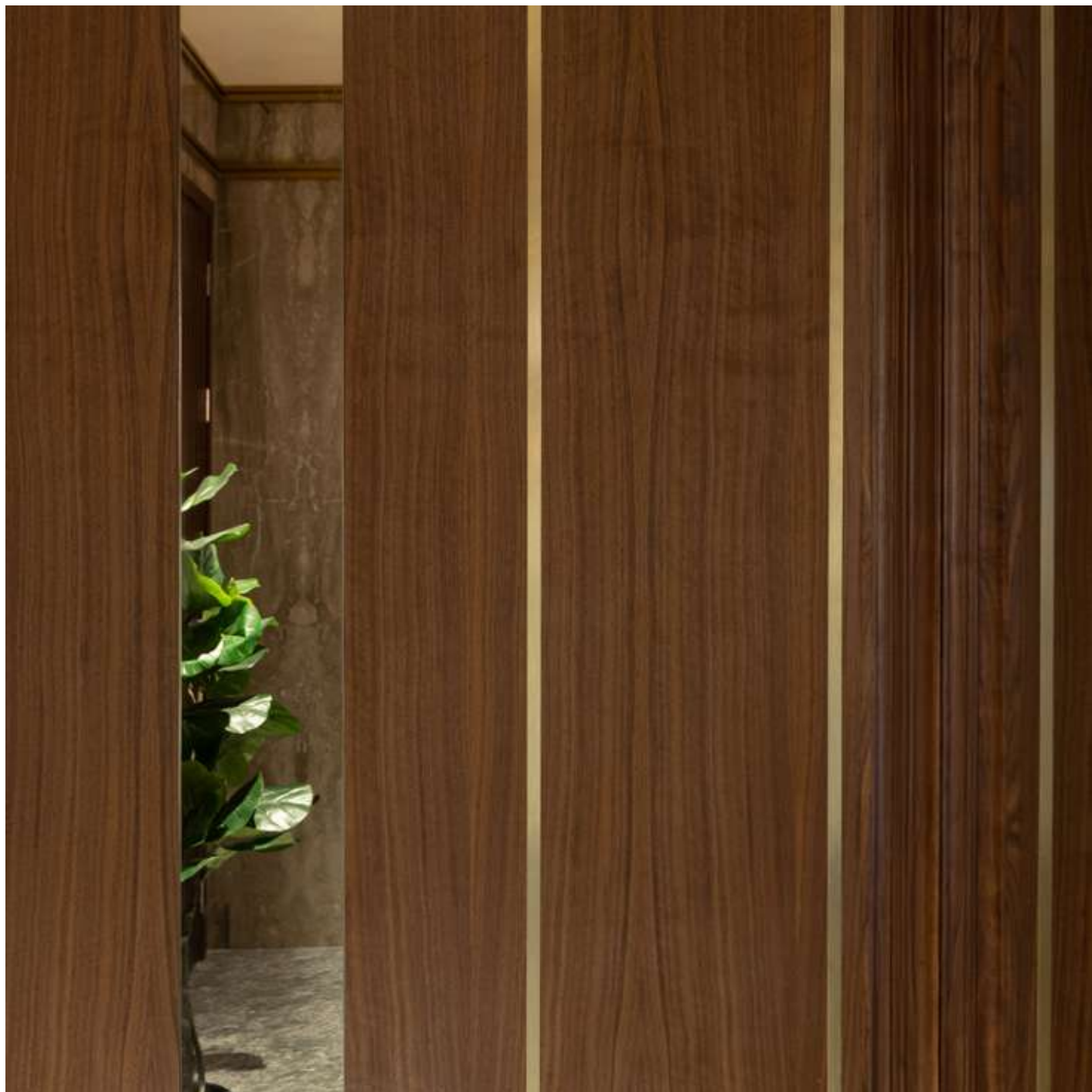
Pelican grove

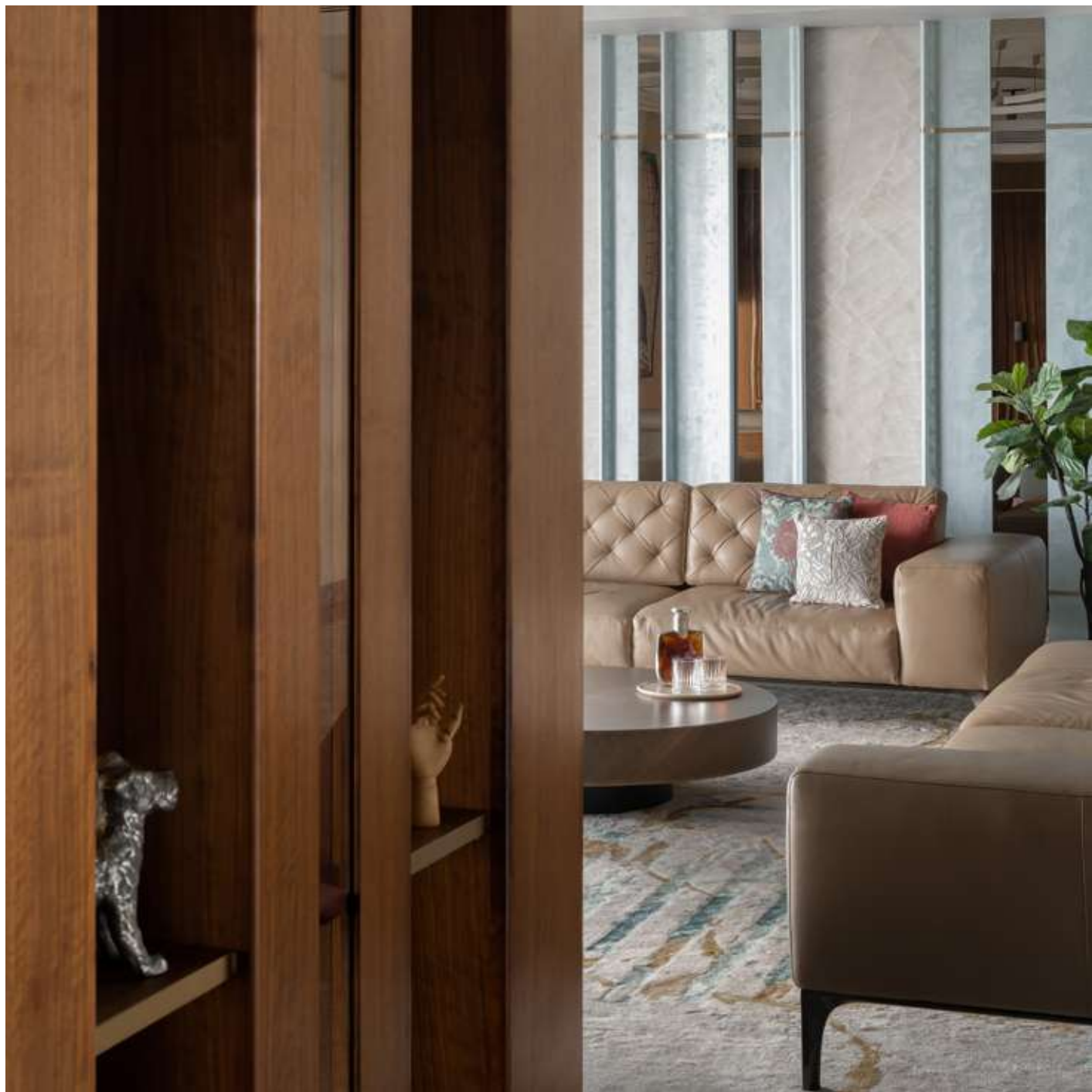
Design Firm : Studio Detailine
Architect : Leanne Alcasoas
Client : Vikram and Amala
Location : Jakkur, Bengaluru
Project Typology : Residential interiors
Photographer : Arjun Krishna
Year : 2021-2022





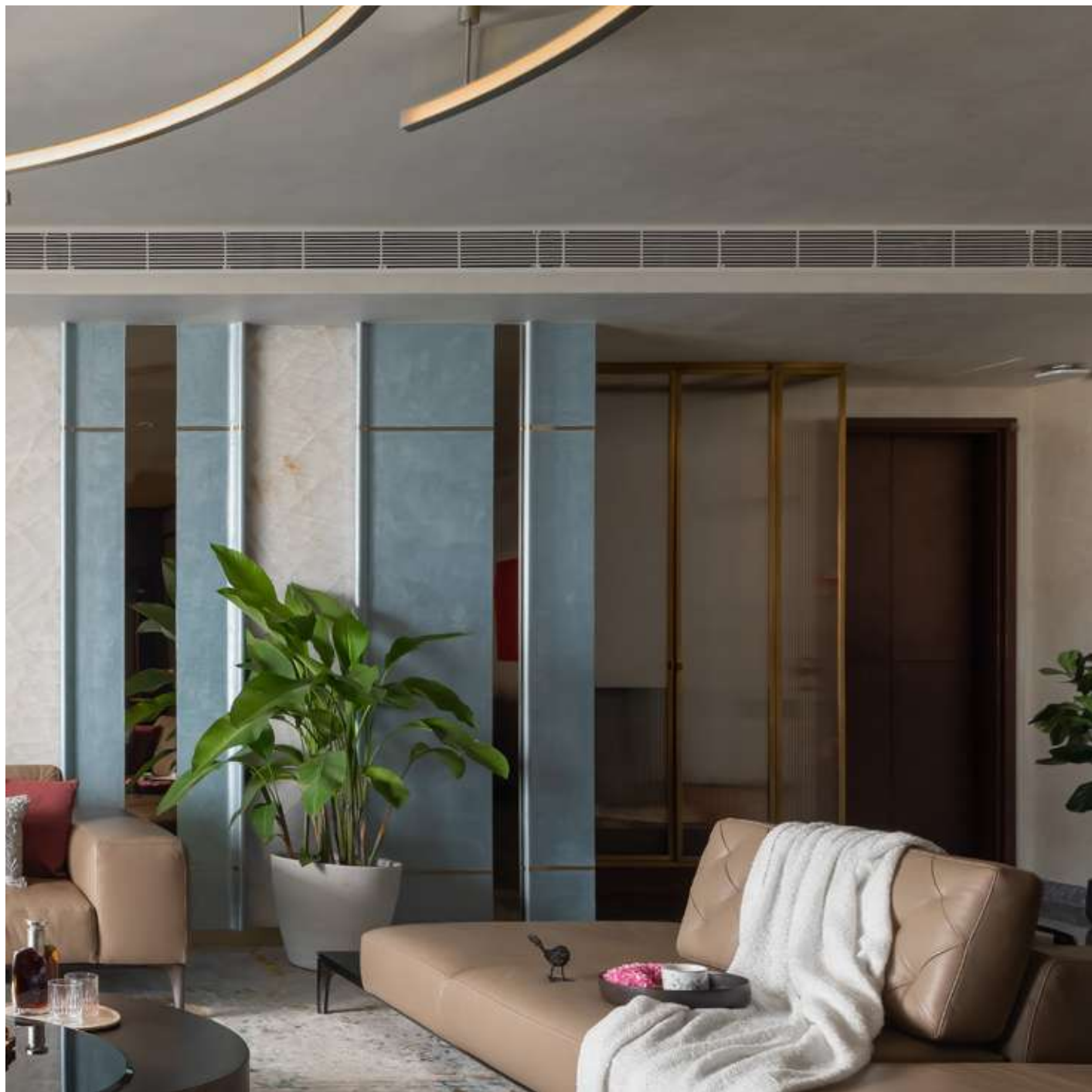








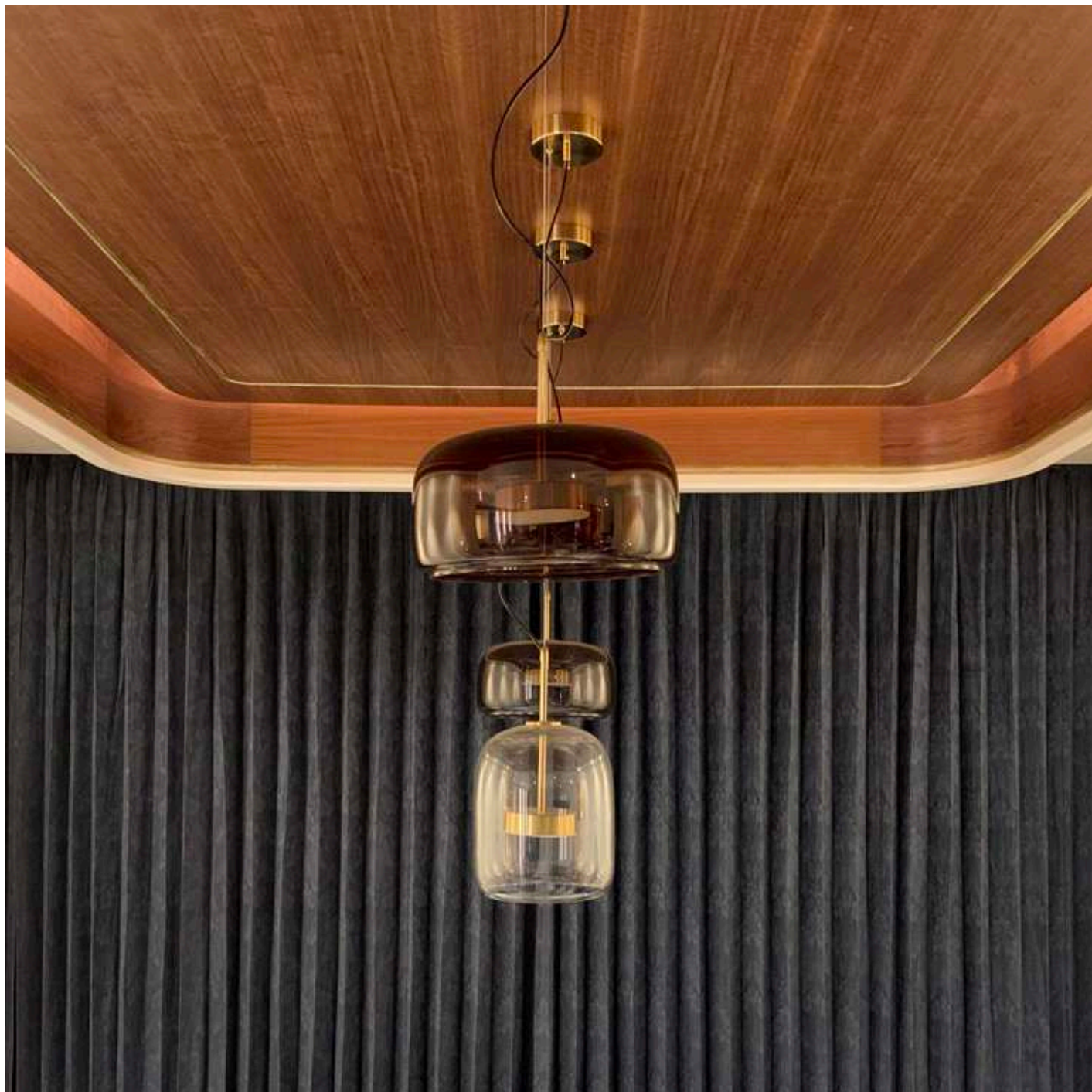


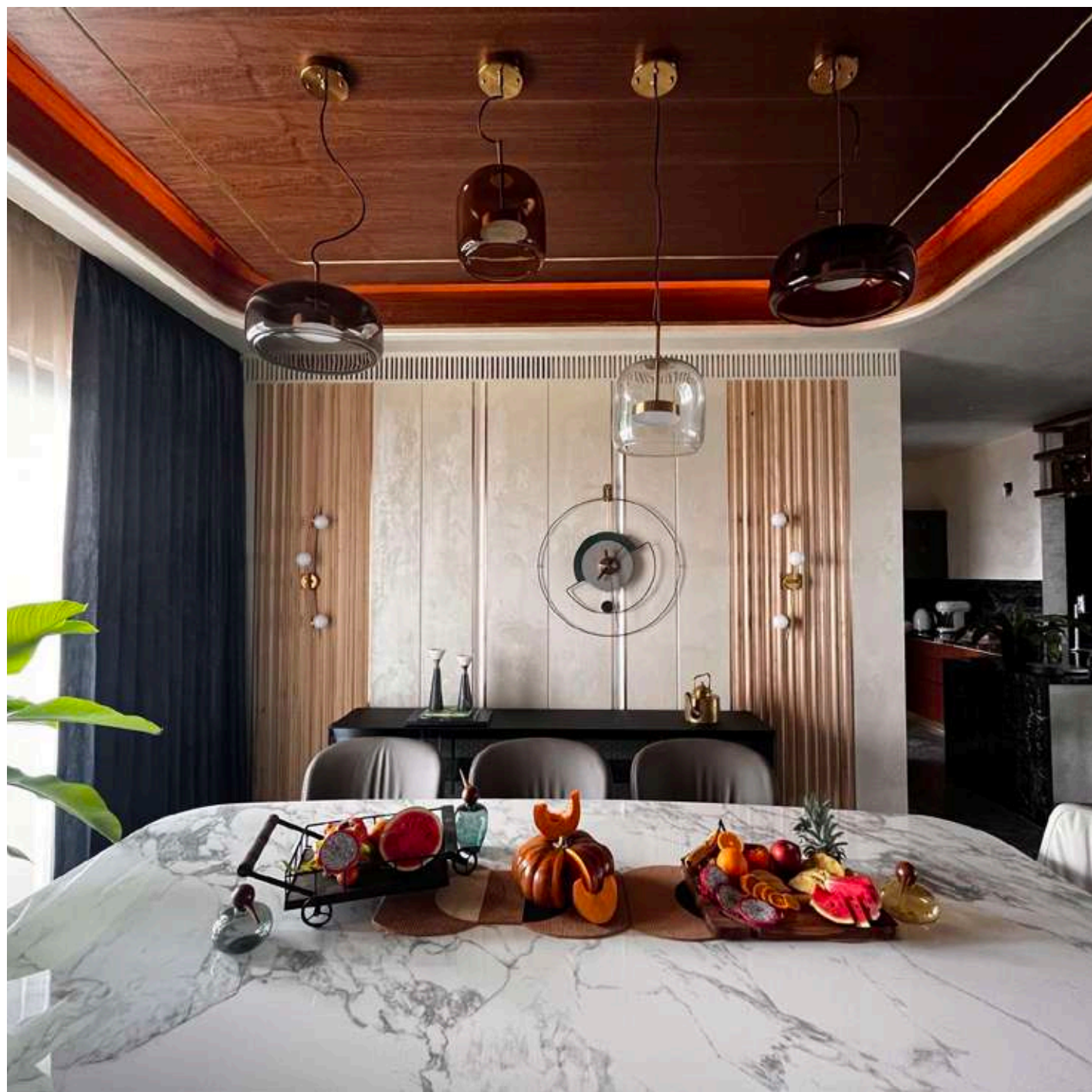


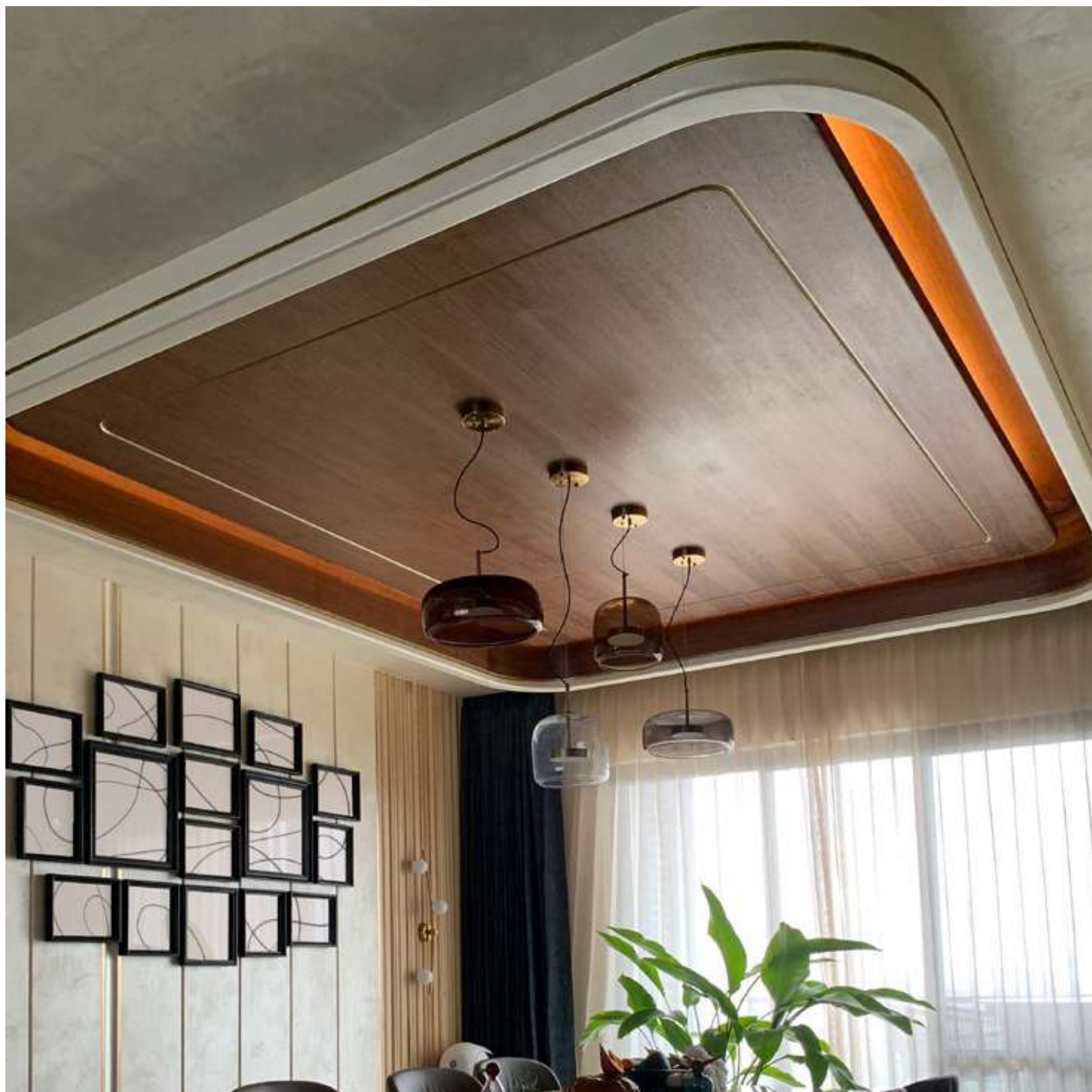




















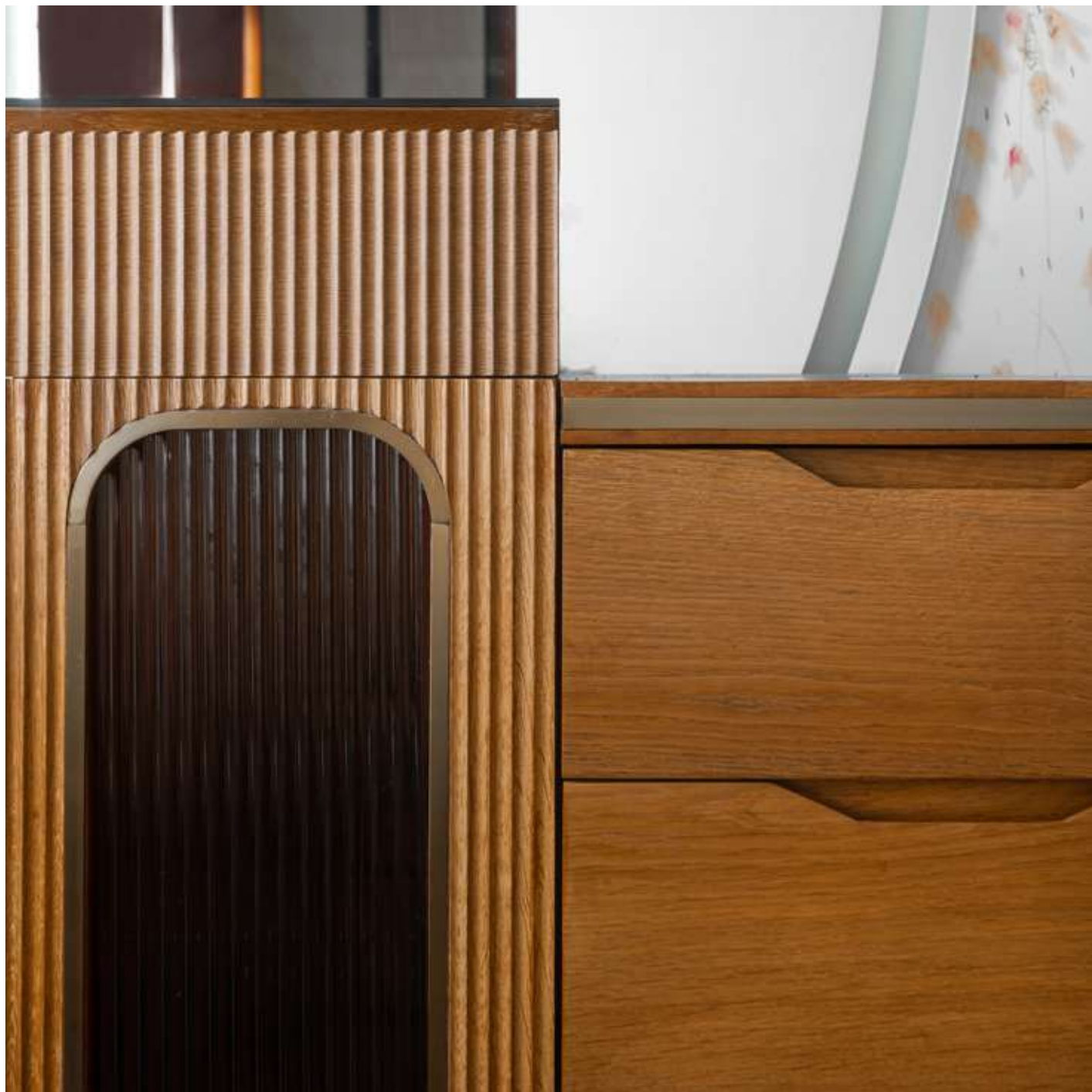


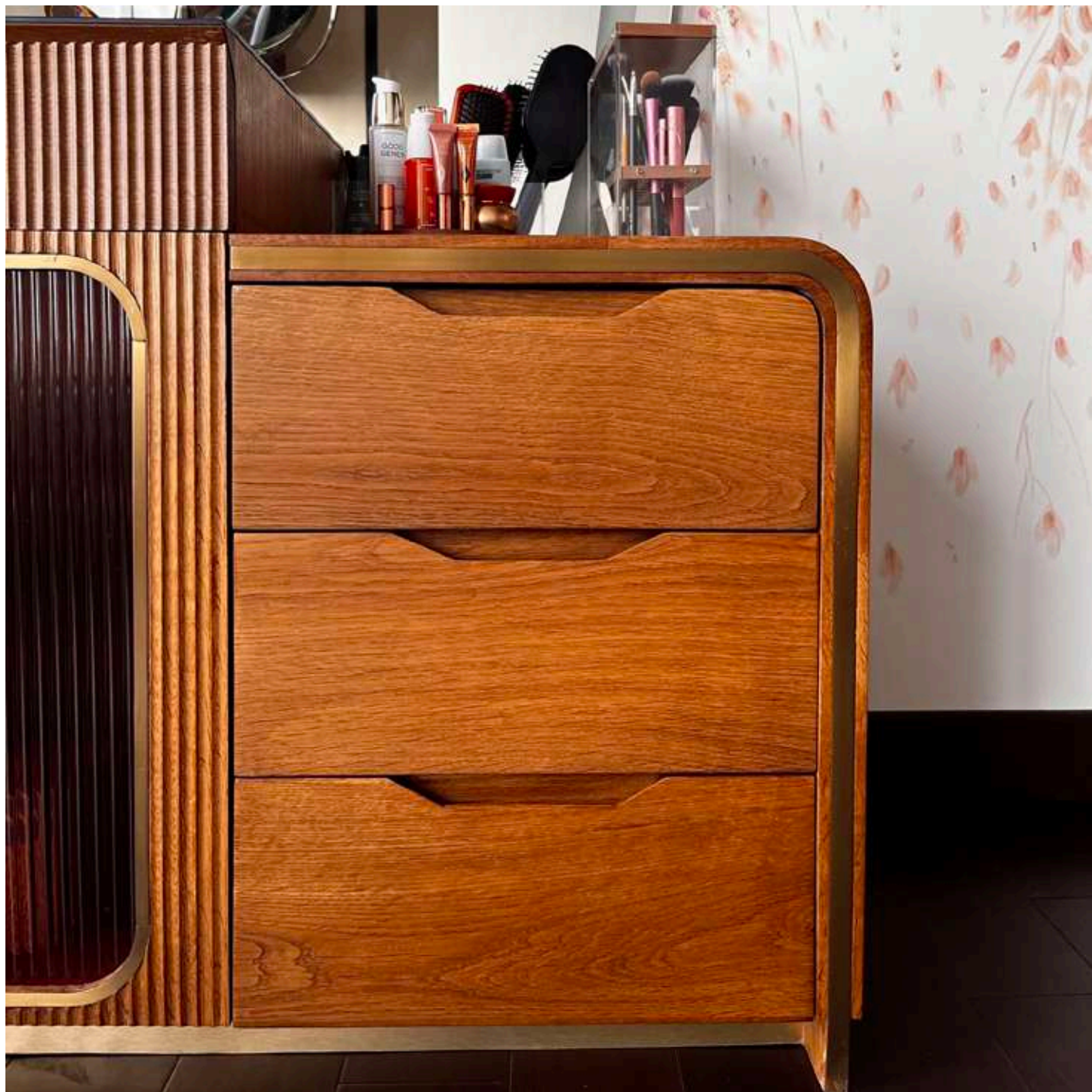


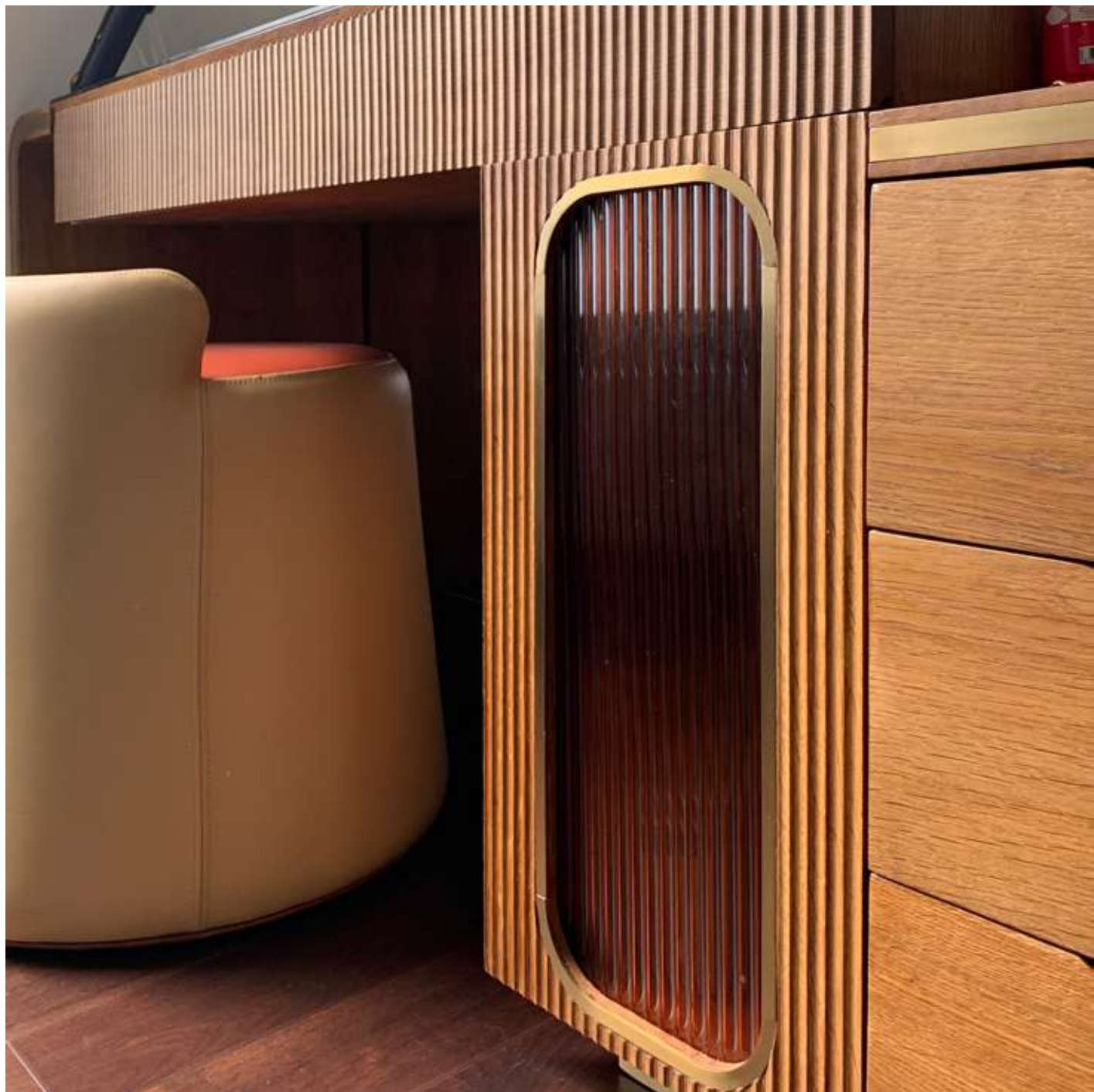
























"Working with Bram Woodcrafting Studio has been an accelerating experience. Their involvement to create an exceptional well detailed piece has been a rewarding process to work closely with them. As designers they give us a platform to fly higher and dream to create out of the box products. No designer product is an impossible product. With a bit of tweaking and keeping the core ideation intact (which definitely respects the designer's output), the product is delivered with great quality of craftsmanship and detail. I believe that a well-executed piece needs time and patience. The Process involves transparency in conversation, lengthy discussions, eye to detail and well-planned execution. We believe that all designers input in life correlates to their output in design and hence it is very important to choose who you trust to execute your designs and their work ethics. We definitely saw a smooth collaboration with Bram wood works as we shared the same wavelength and the processes were intact."

**-Leanne
Architect**

Material Palette



Walnut



White Oak



Walnut Veneer



OAK fluted panels



Cane



Fluted glass



Duco




Brass strips



OAK veneer







Hunsur Plywood Works Pvt. Ltd. Hunsply is a trusted brand in the plywood industry since 1946.

Nestled amidst greenery in the timber hub of Hunsur, Karnataka, Hunsply has endeavored to provide good quality interior infrastructure products. Keeping in tune with the times, Hunsply has diversified its business and constantly reinvented itself according to the latest trends, needs and tastes. In fact that's the secret why yesterday's favourite product is today's most revered brand.

THE CUTTING EDGE OF QUALITY

Right from selecting and preparing the best grade timber and passing it through rigorous quality tests, an eagle eye is kept every step of the way. Close supervision of each process - butting, slicing, drying, clipping, and pressing of the veneer and plywood - ensures that the final product is an excellent example of supreme quality and indeed worthy of bearing the Hunsply brand name.

VENEER OVERLAYING VENEER LEAF THICKNESS DESIGNER SHEETS

Custom design veneer sheets can be manufactured. Customer will have to provide the drawings and veneer combination along with grain direction. Minimum order quantities will apply.

TO KNOW MORE





PROJECT 02

Library

Architect : Roshni Gera
Client : Head start Educational
Academy Bangalore
Location : Bengaluru
Project Typology : Library, Institution
Photographer : Anand Jaju
Year : 2022-2023



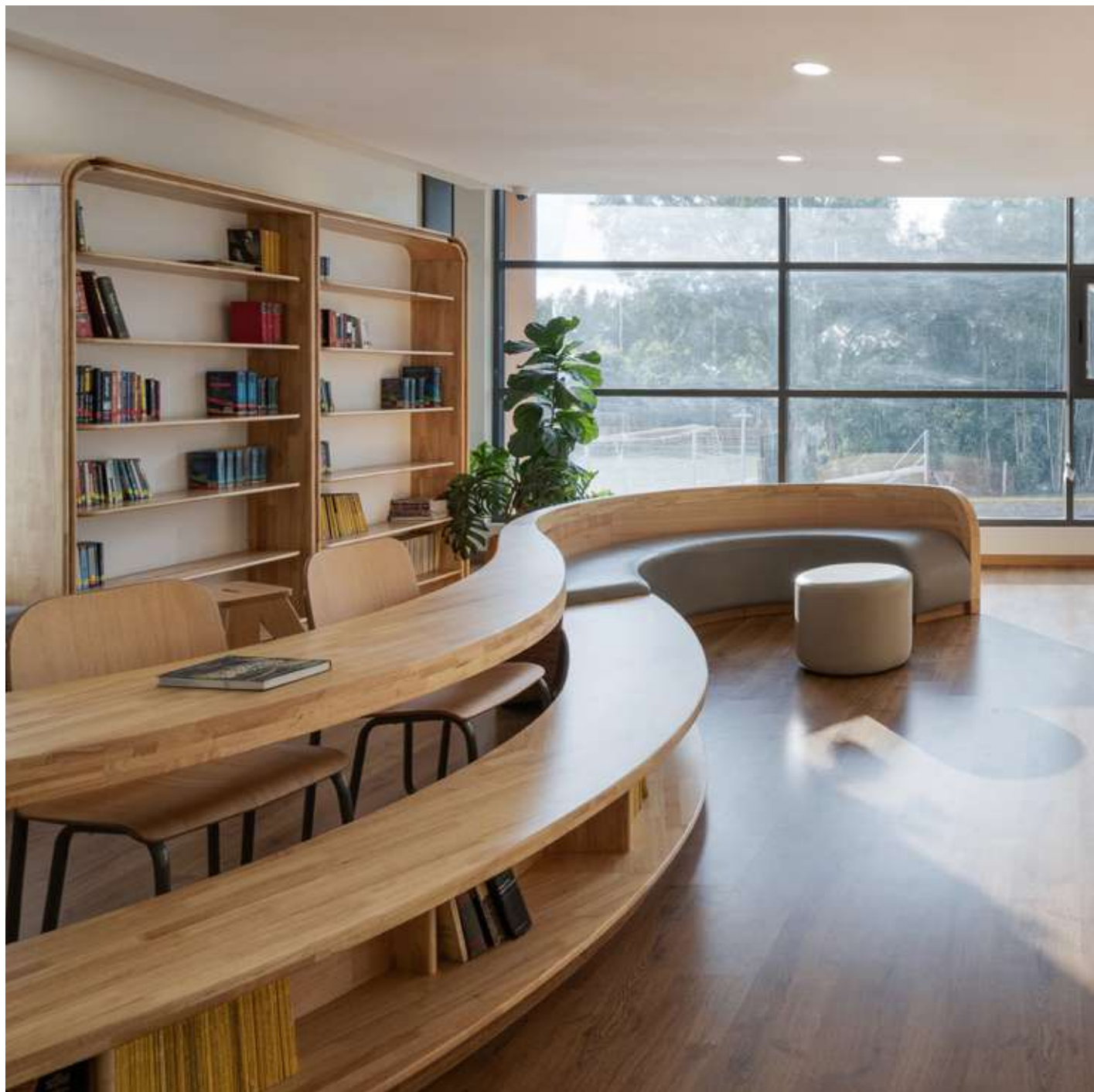


























"I had the pleasure of collaborating with BWS on our Library project, and it was an absolute delight! From start to finish, their seamless approach to design, execution, and delivery made the entire process effortless. The team's expertise ensured impeccable quality and precision at every stage, maintaining the integrity of the initial vision while enhancing it with subtle improvements. I'm immensely grateful for their dedication and look forward to future projects with BWS. Wishing them continued success!"

Roshni Gera
Architect

Material Palette



Rubber Wood



Finger Joint



Mango
Maple Veneer



Milia Dubia



Plymould
Fabrication



Metal Fabrication
Powder Coating







A transitional kitchen design combines elements of both traditional and contemporary styles, resulting in a versatile and balanced aesthetic. It blends classic and modern elements to create a timeless and elegant space.

The secret ingredient to elevate your cooking - Masfurn Modular Kitchens! Whether you're looking for a contemporary, traditional, or unique style for your kitchen we deliver with the finest craftsmanship & best quality materials.

The secret ingredient to elevate your cooking - Masfurn Modular Kitchens!

Whether you're looking for a contemporary, traditional, or unique style for your kitchen we deliver with the finest craftsmanship & best quality materials.

MORE INFORMATION



TRANSITIONAL KITCHENS

PROJECT 03

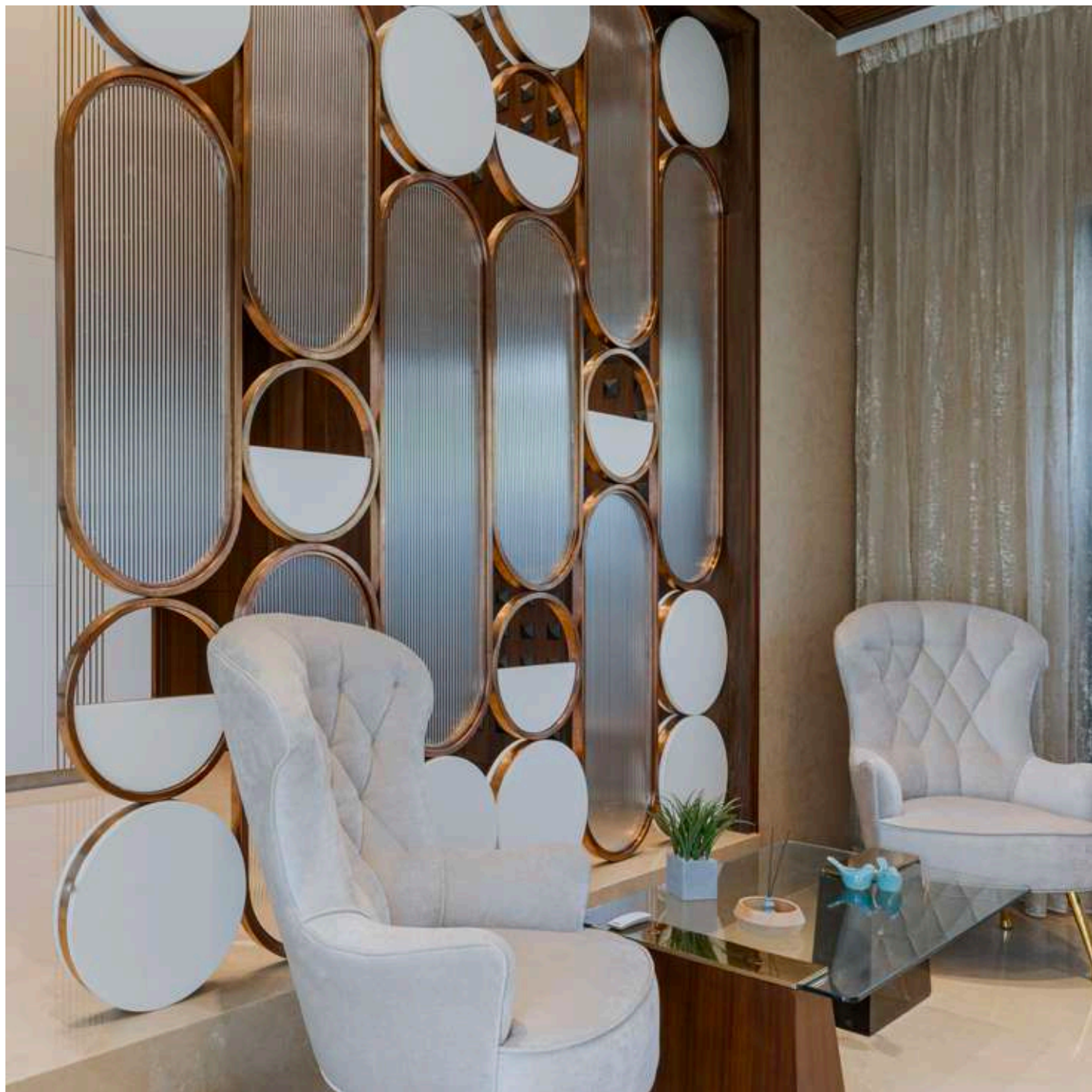
Shivoham Residence

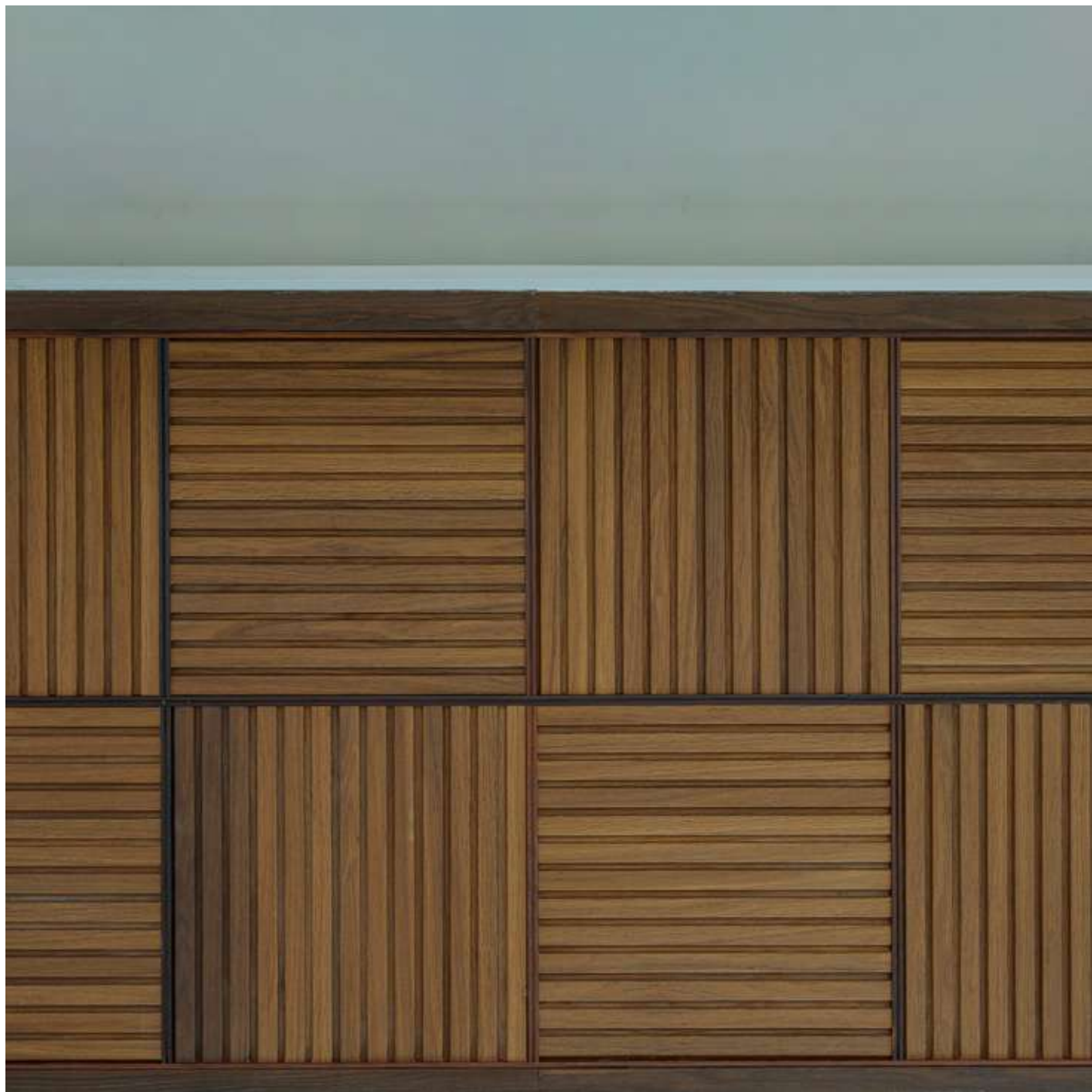
Architect : Satish's Swanlines
Client : Vishwanath & Seema
Location : Mysore
Project Typology : Residential interiors
Photographer : Anand Jaju
Year : 2022-2023

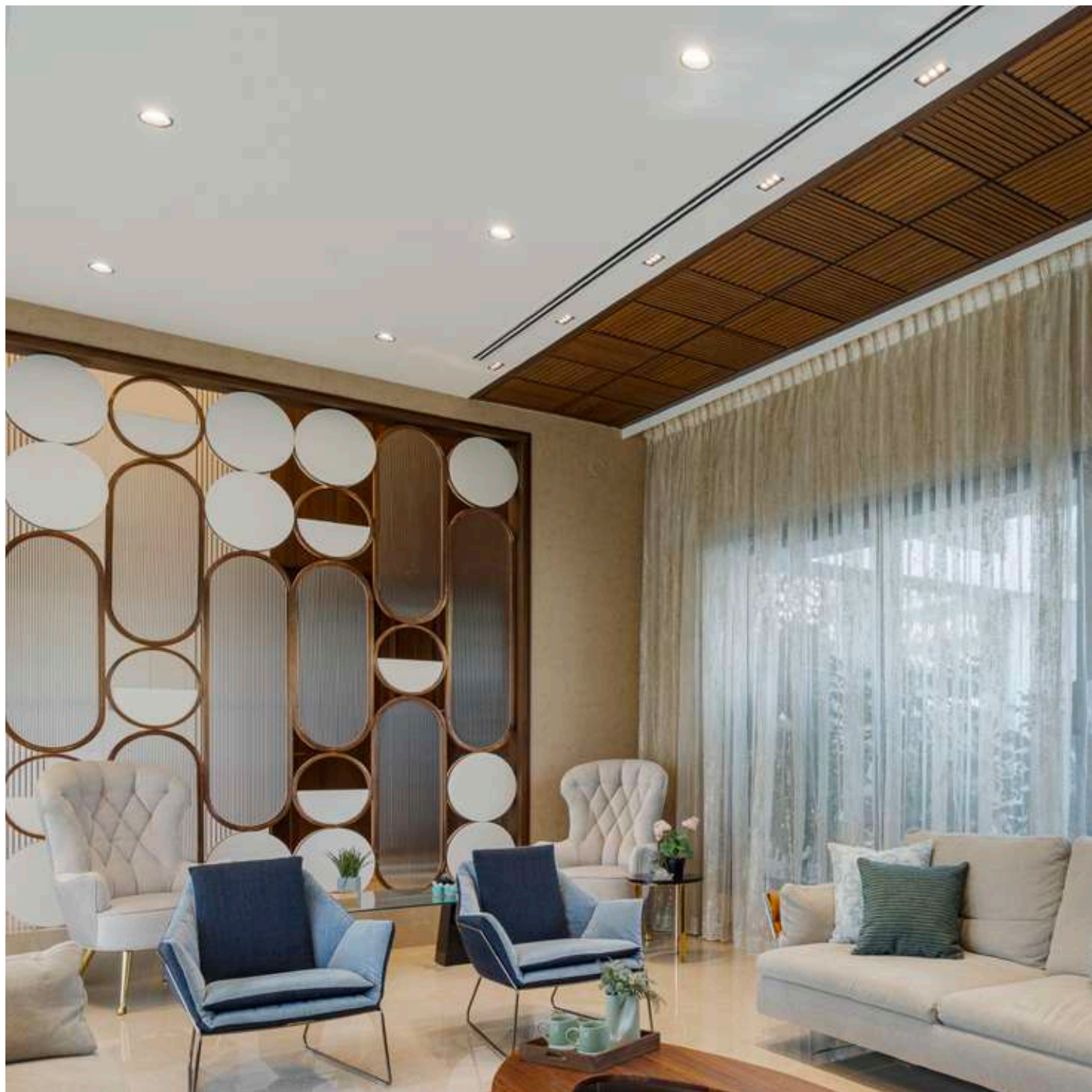




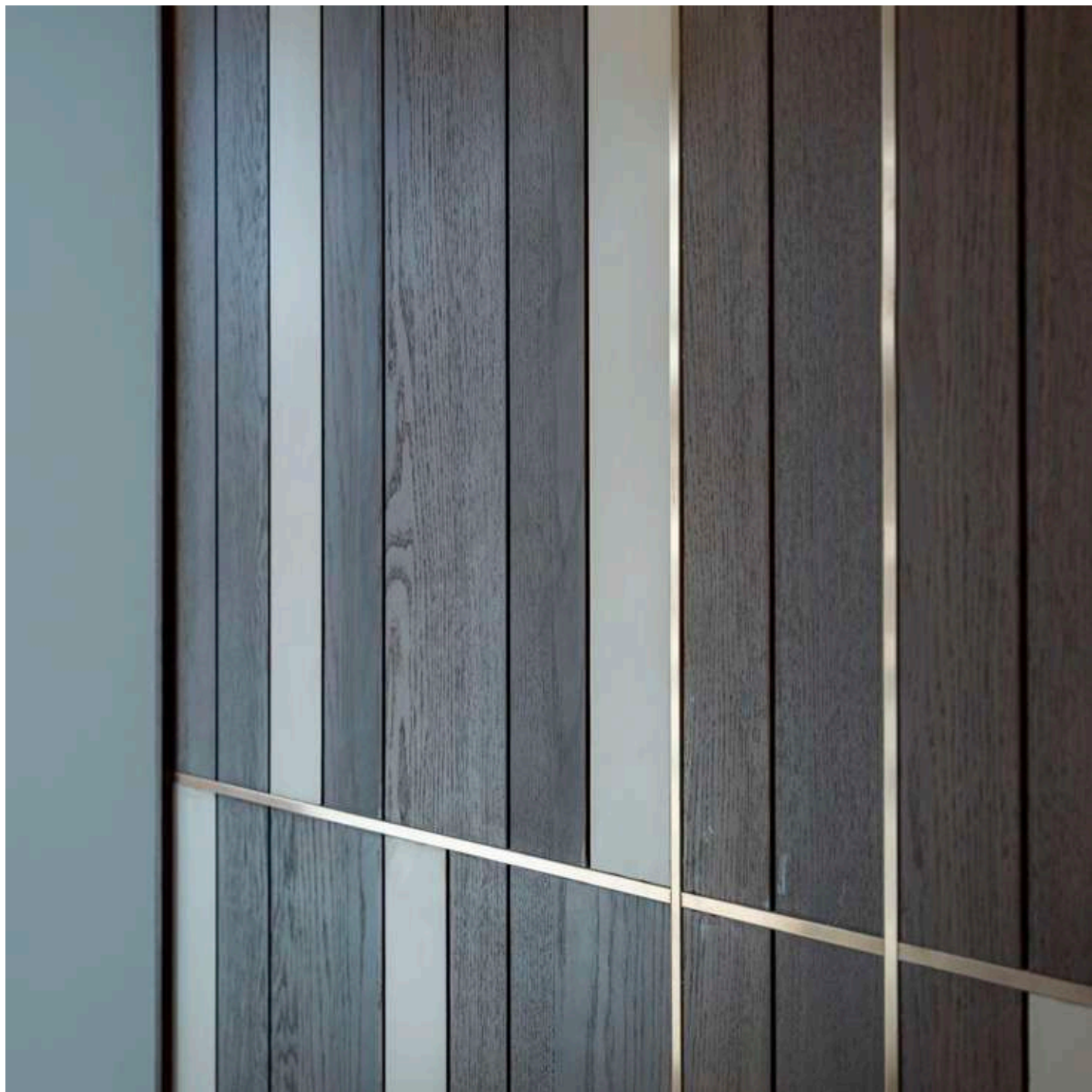






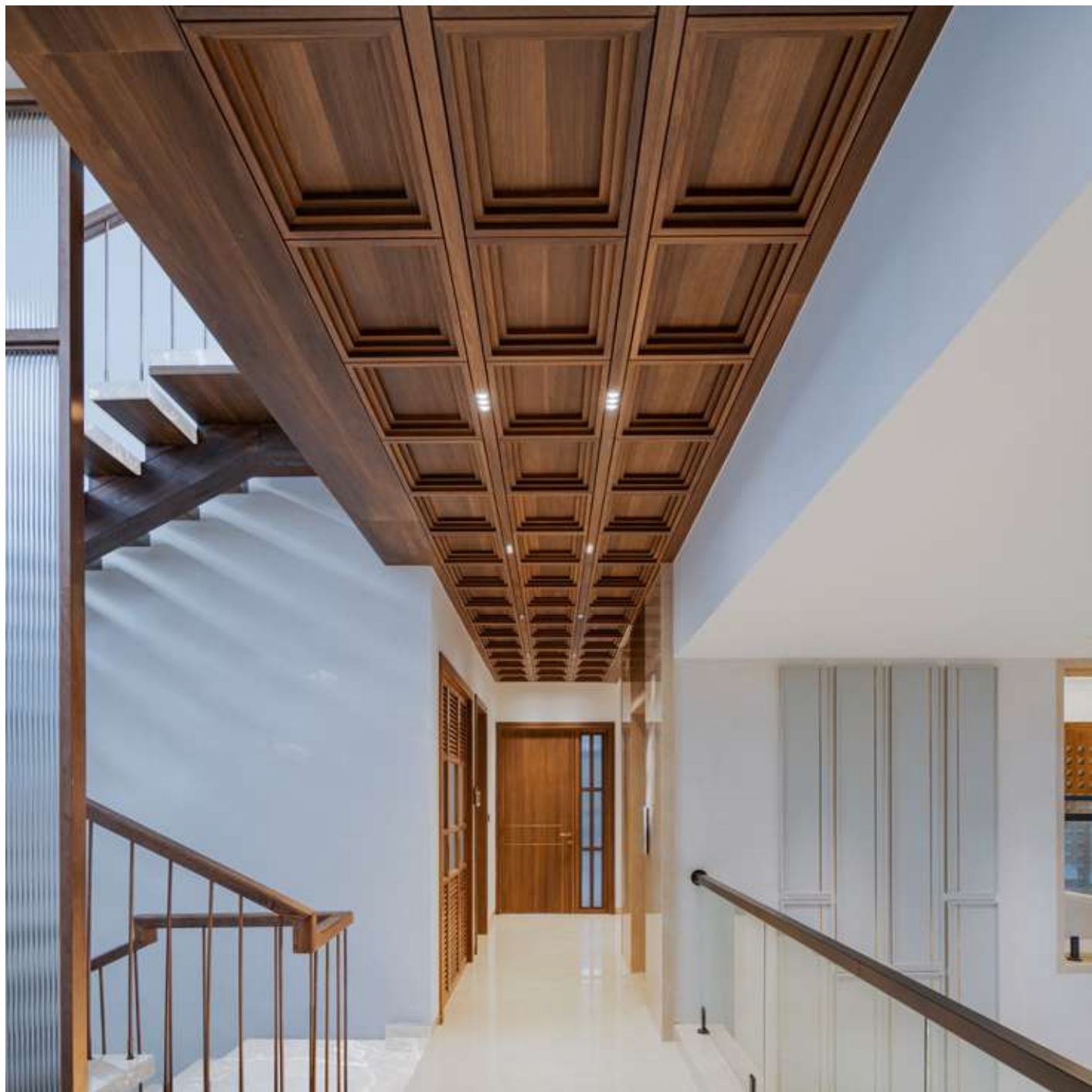


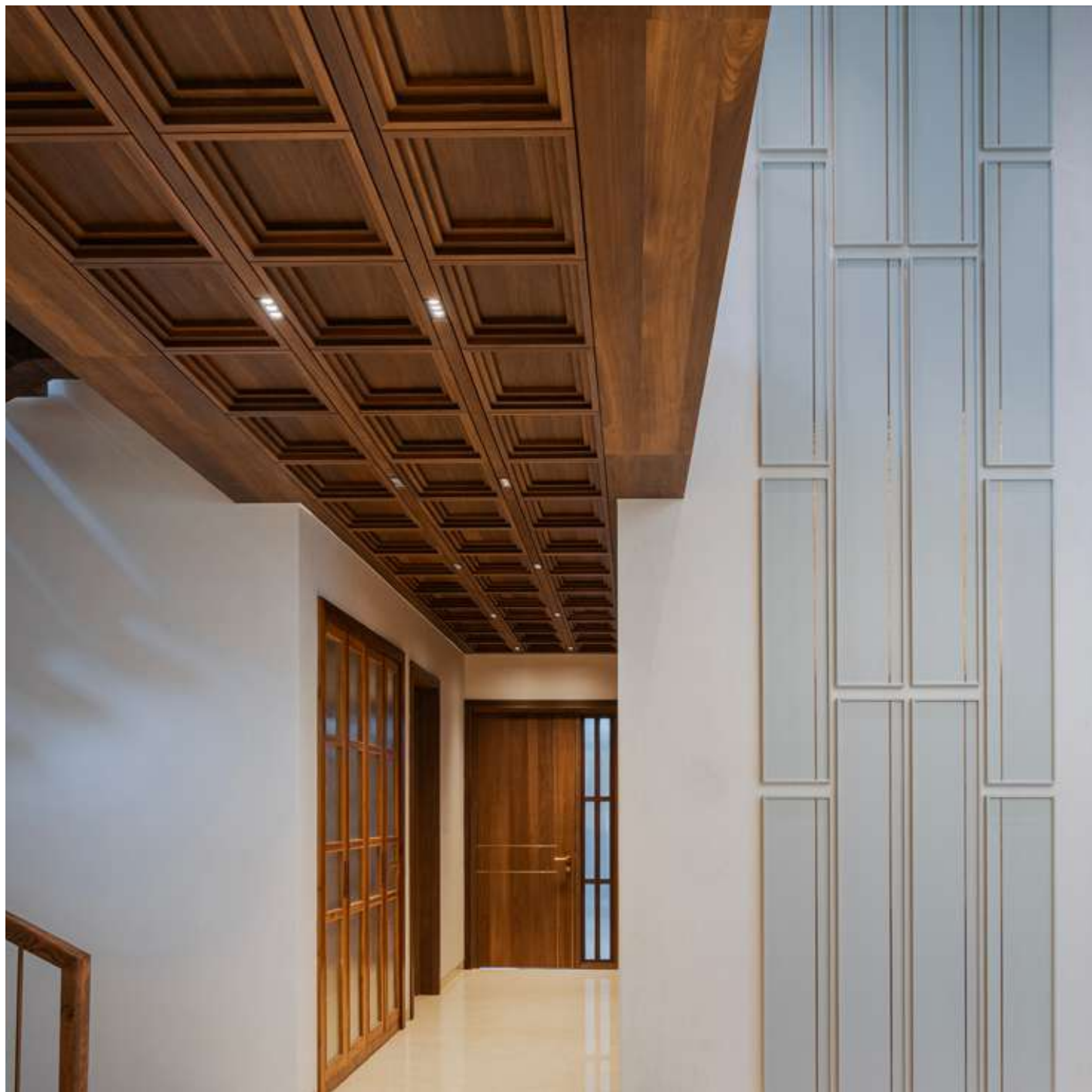


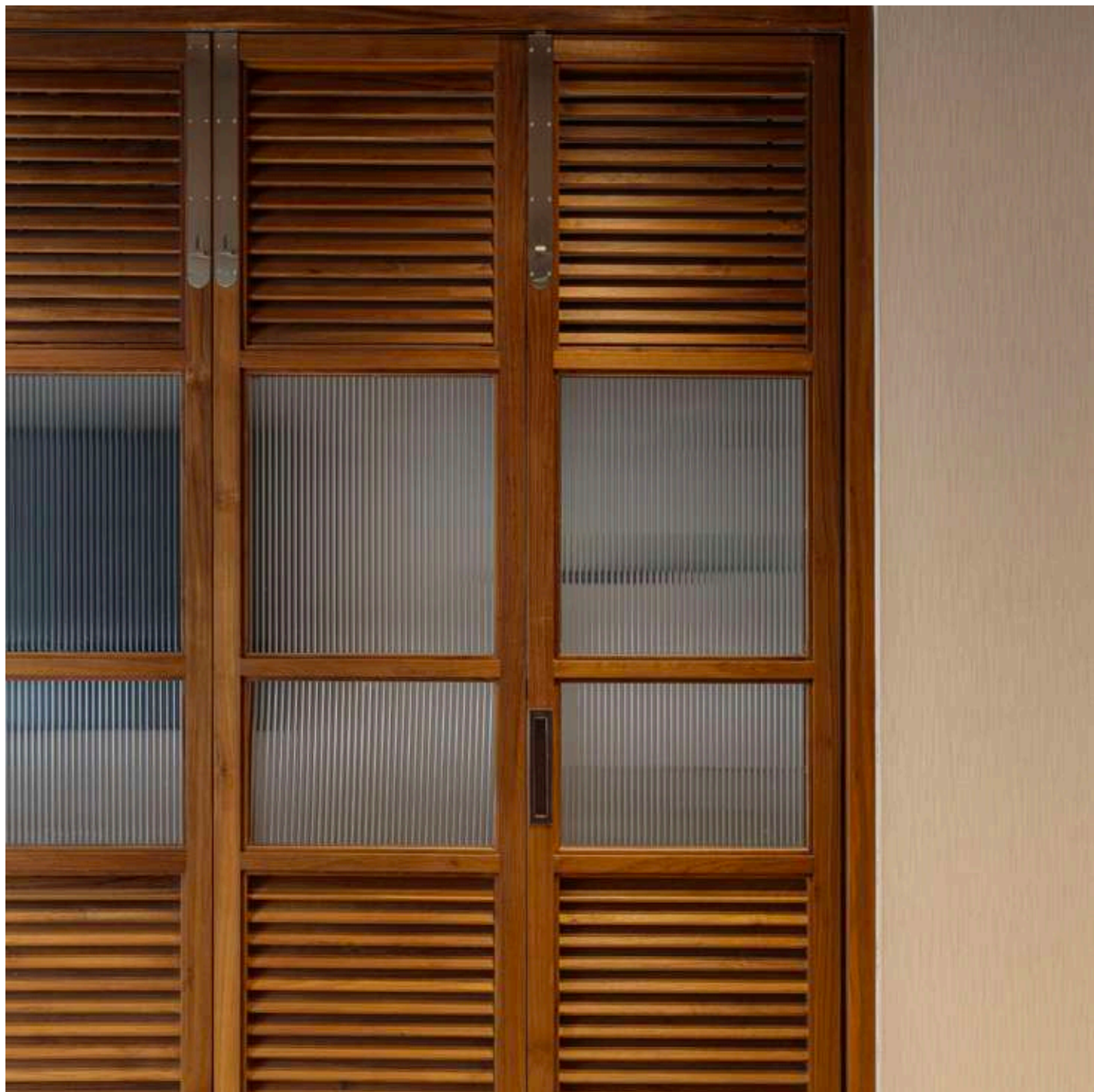




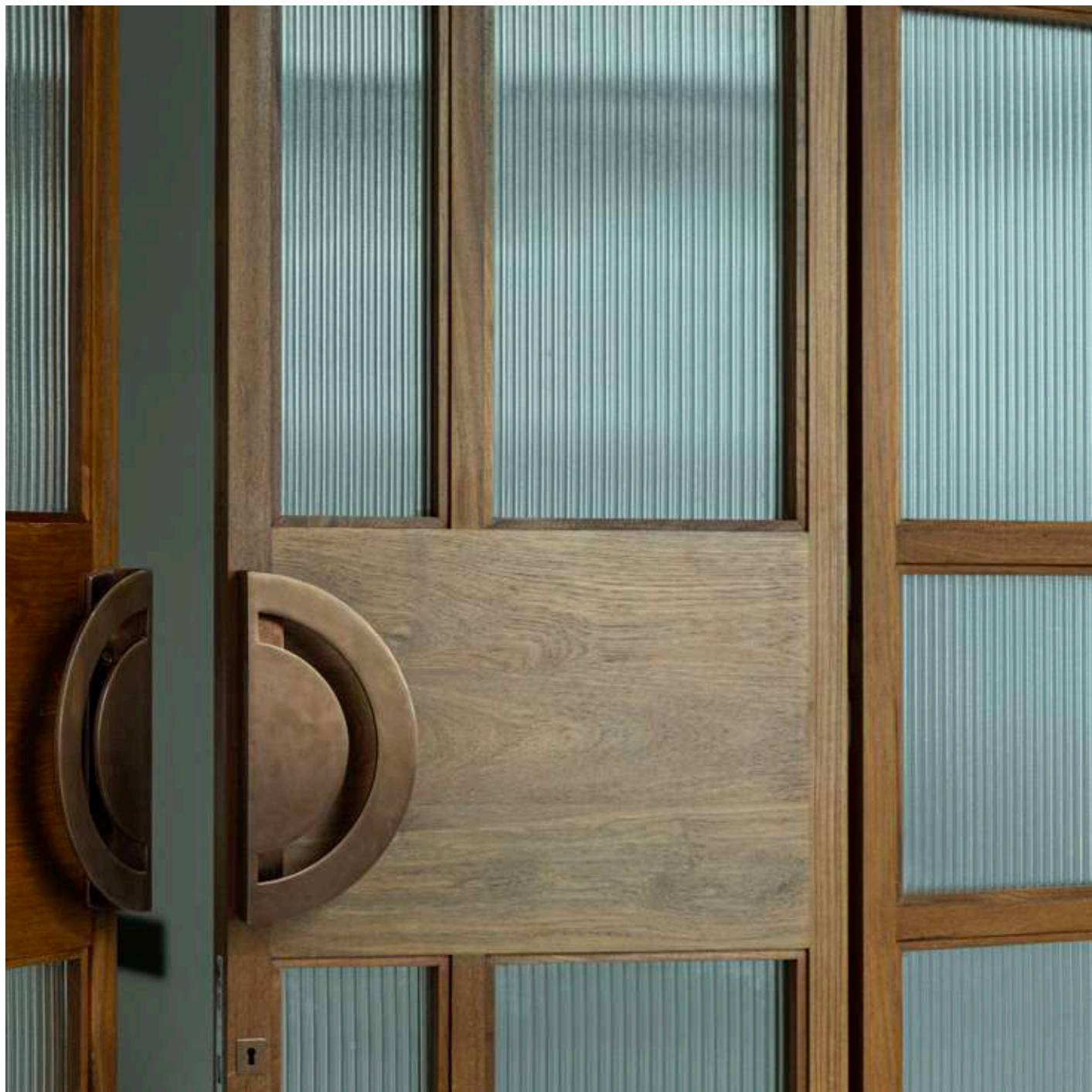


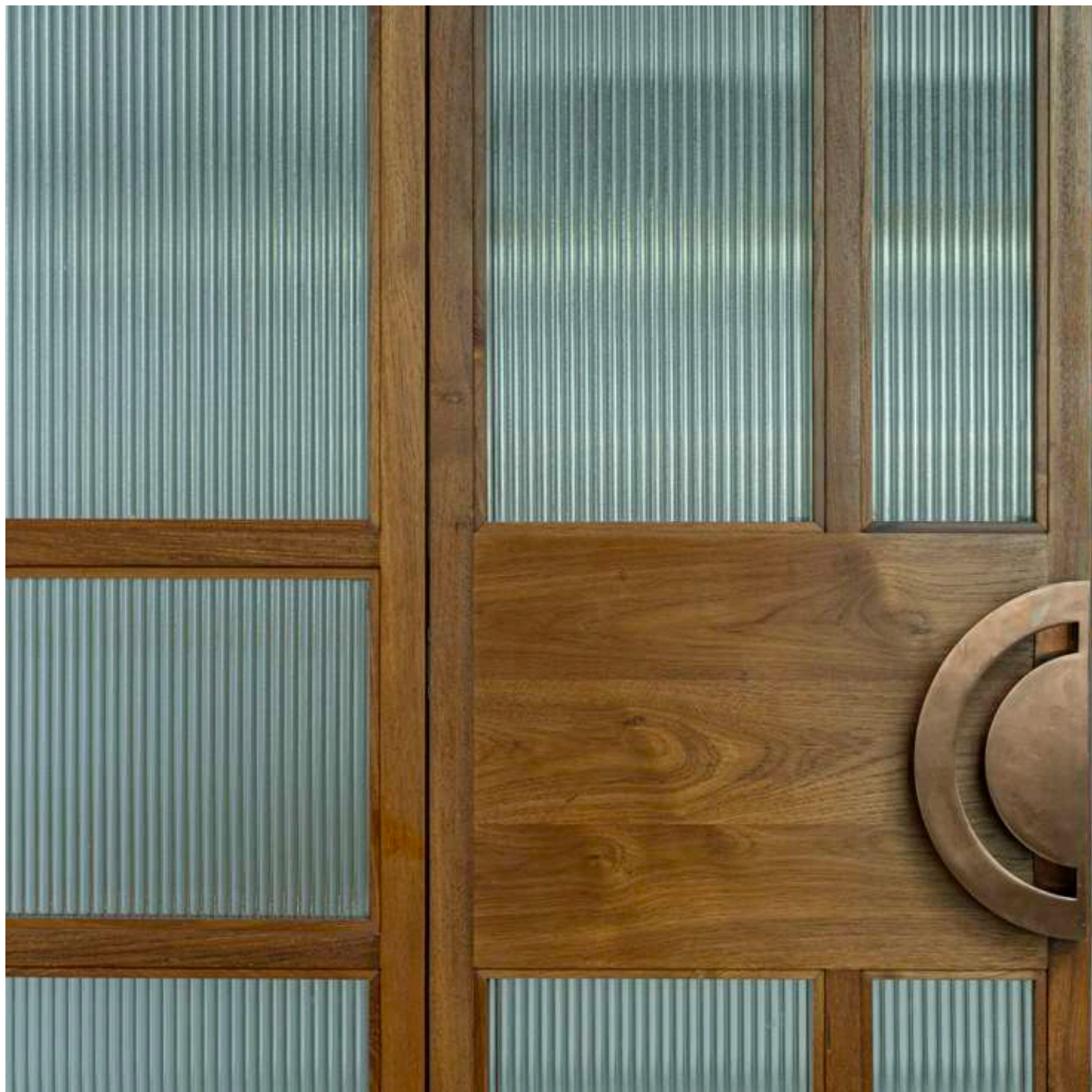




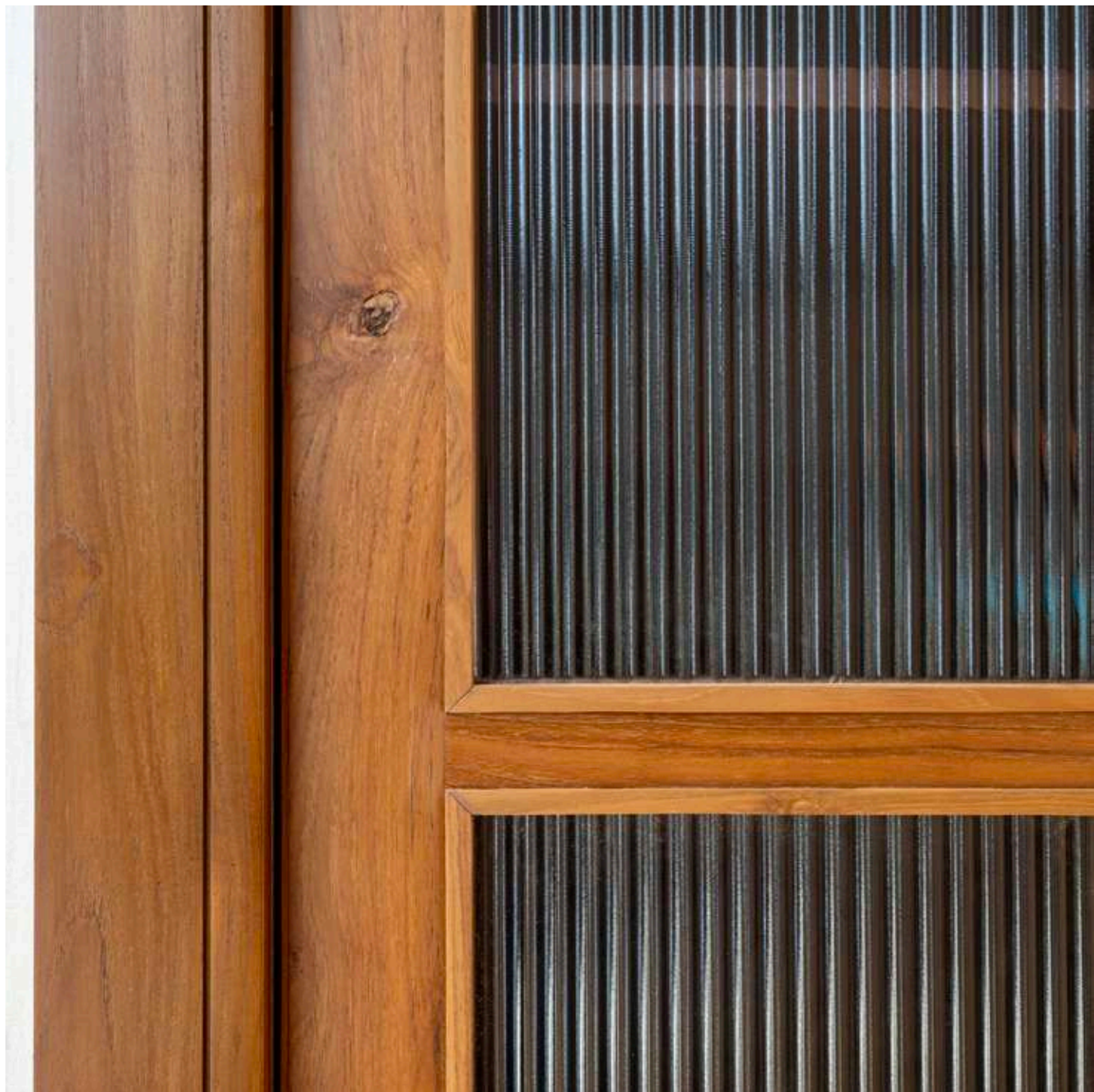




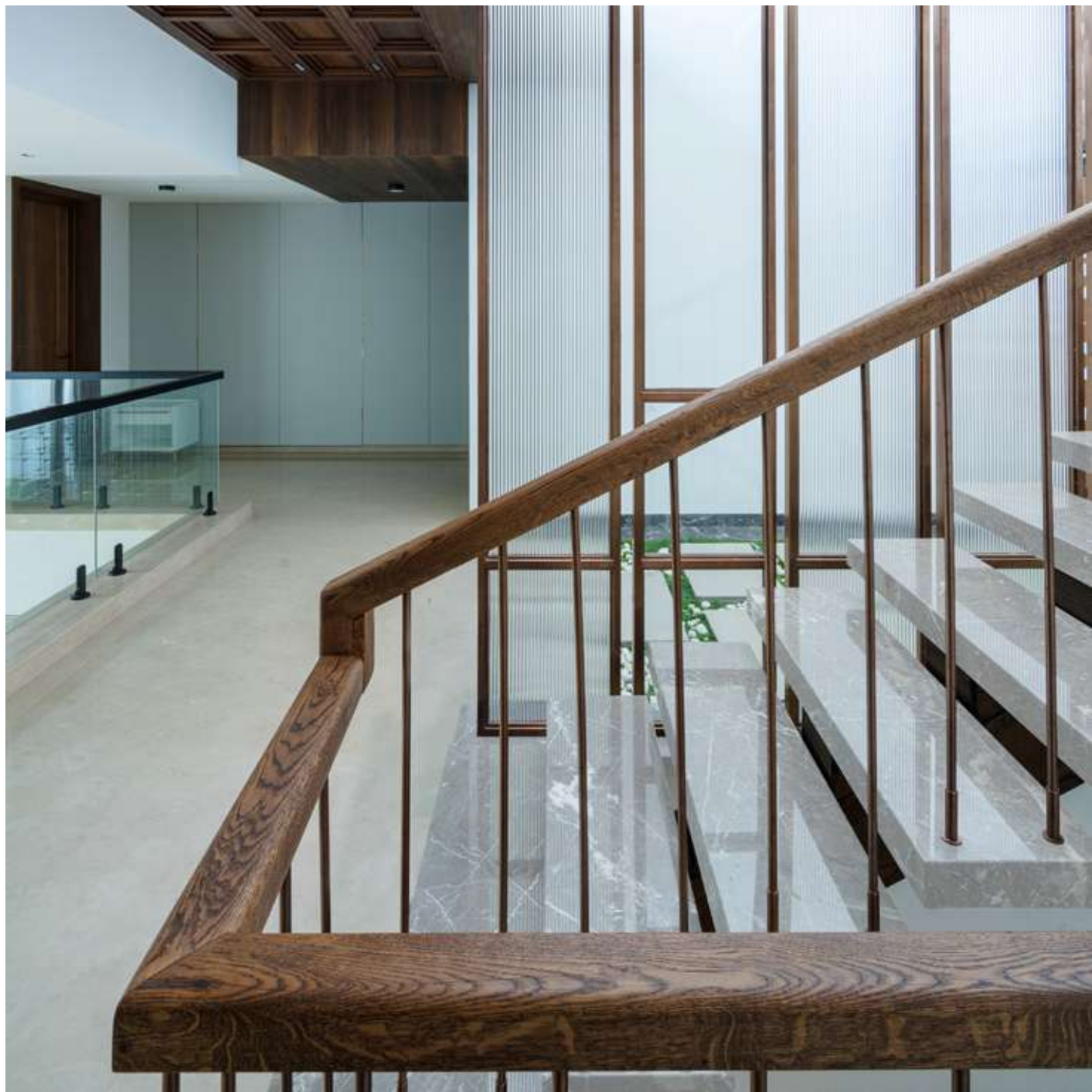


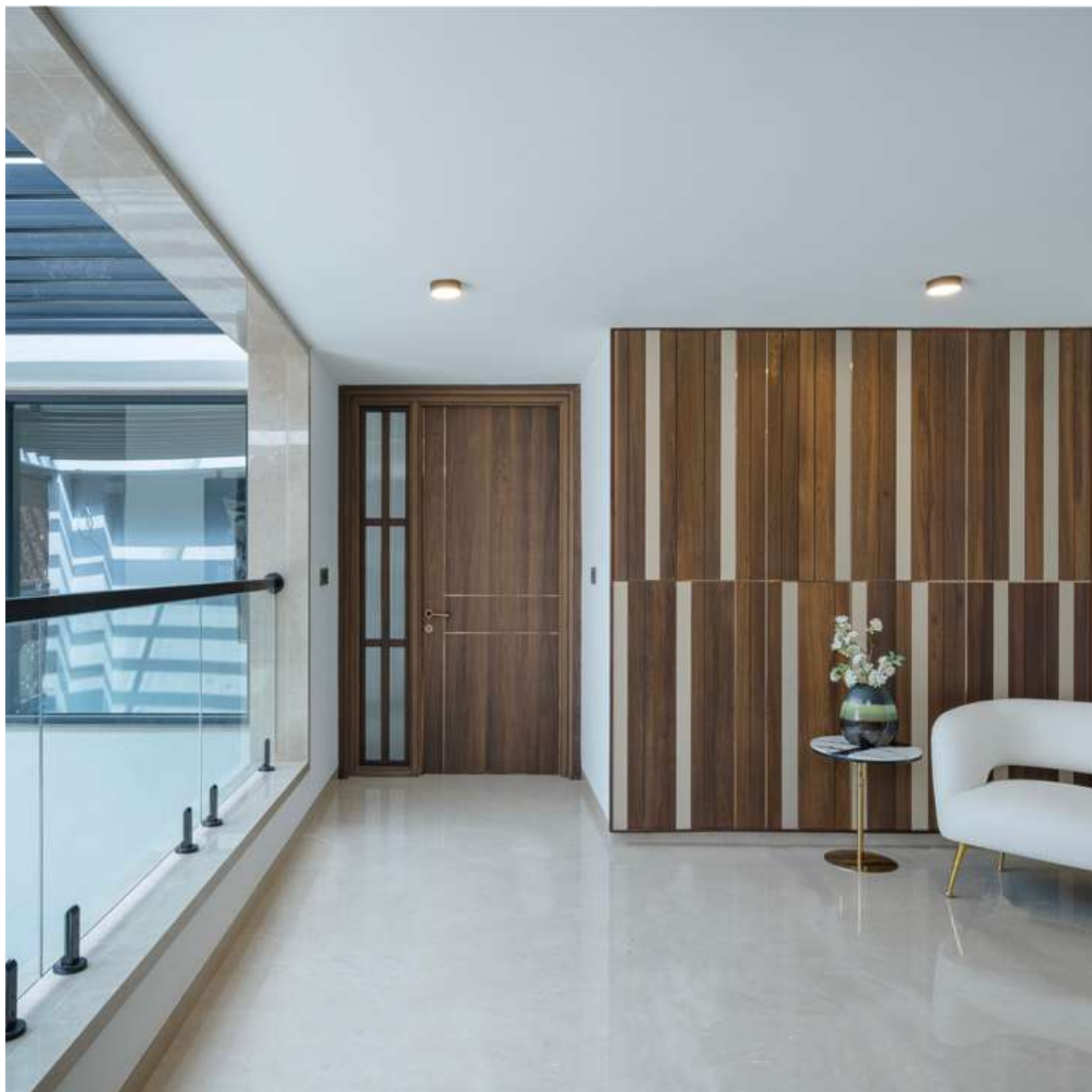


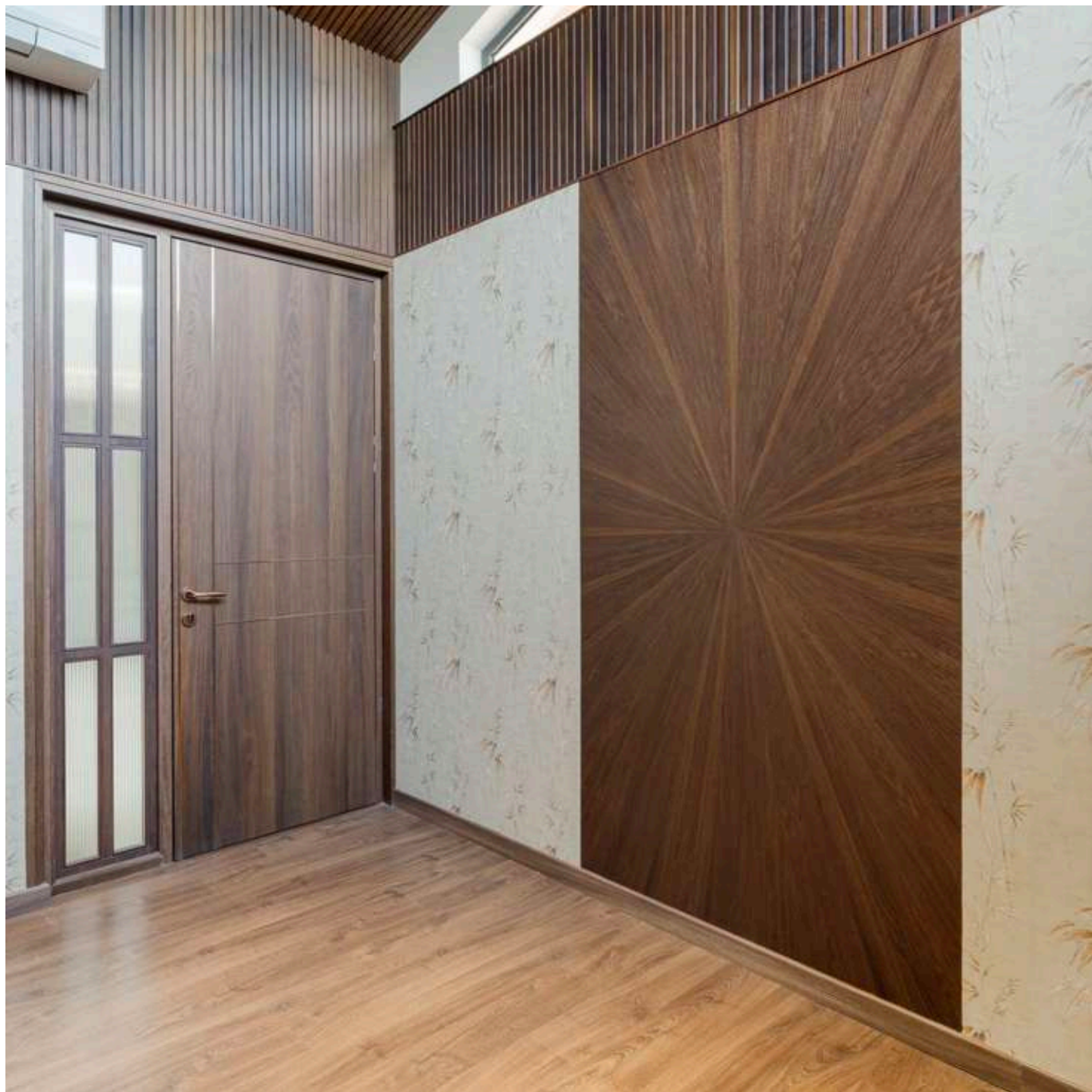




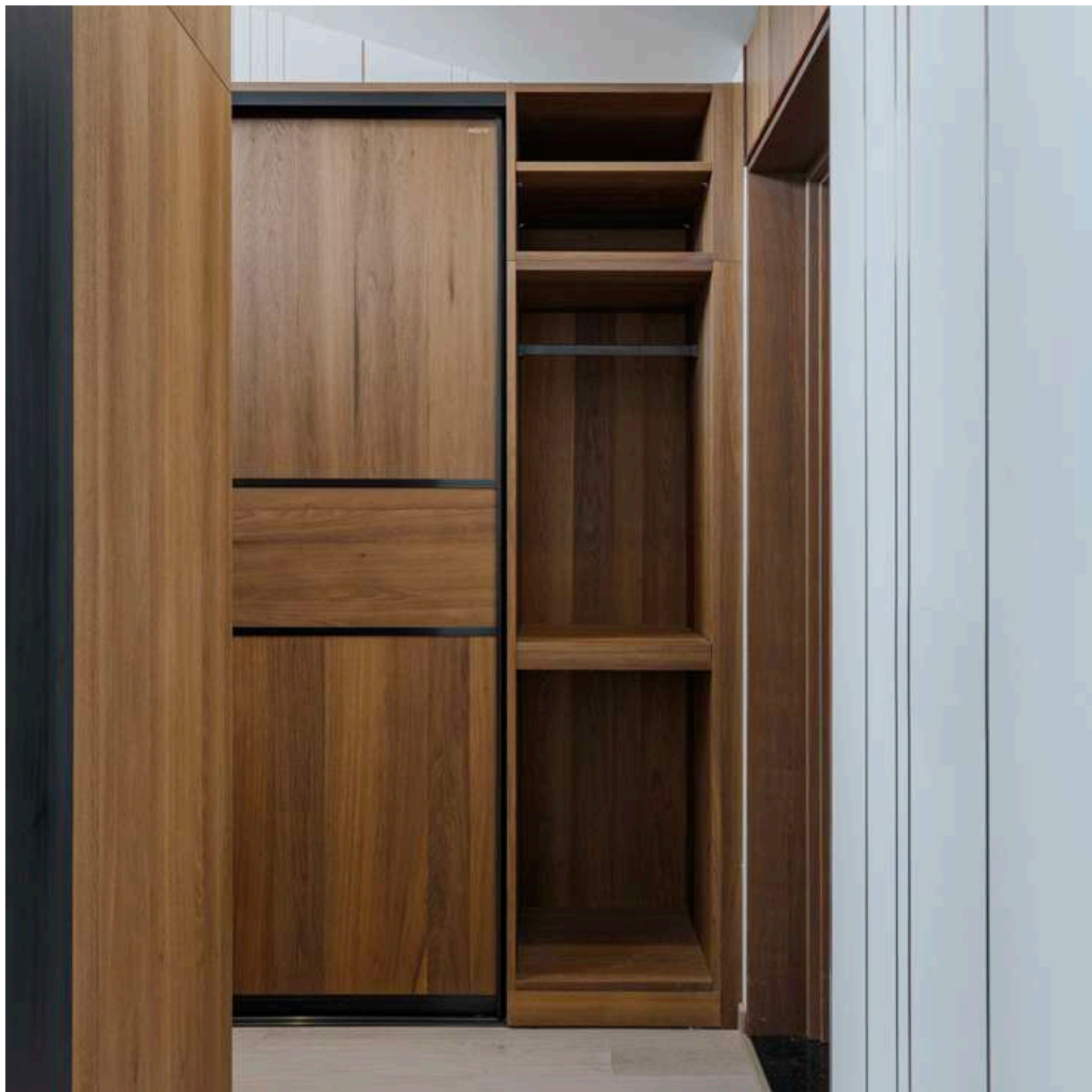


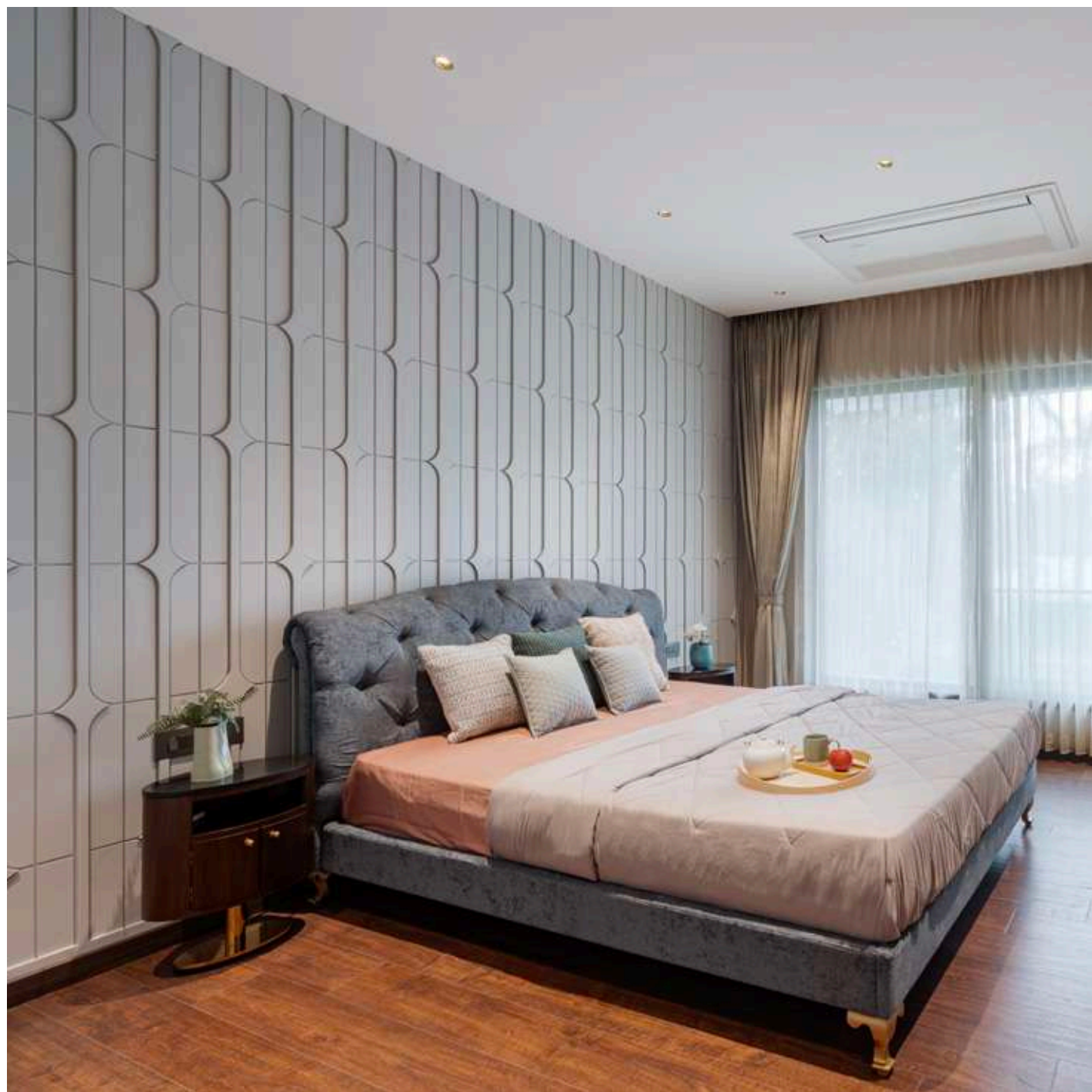








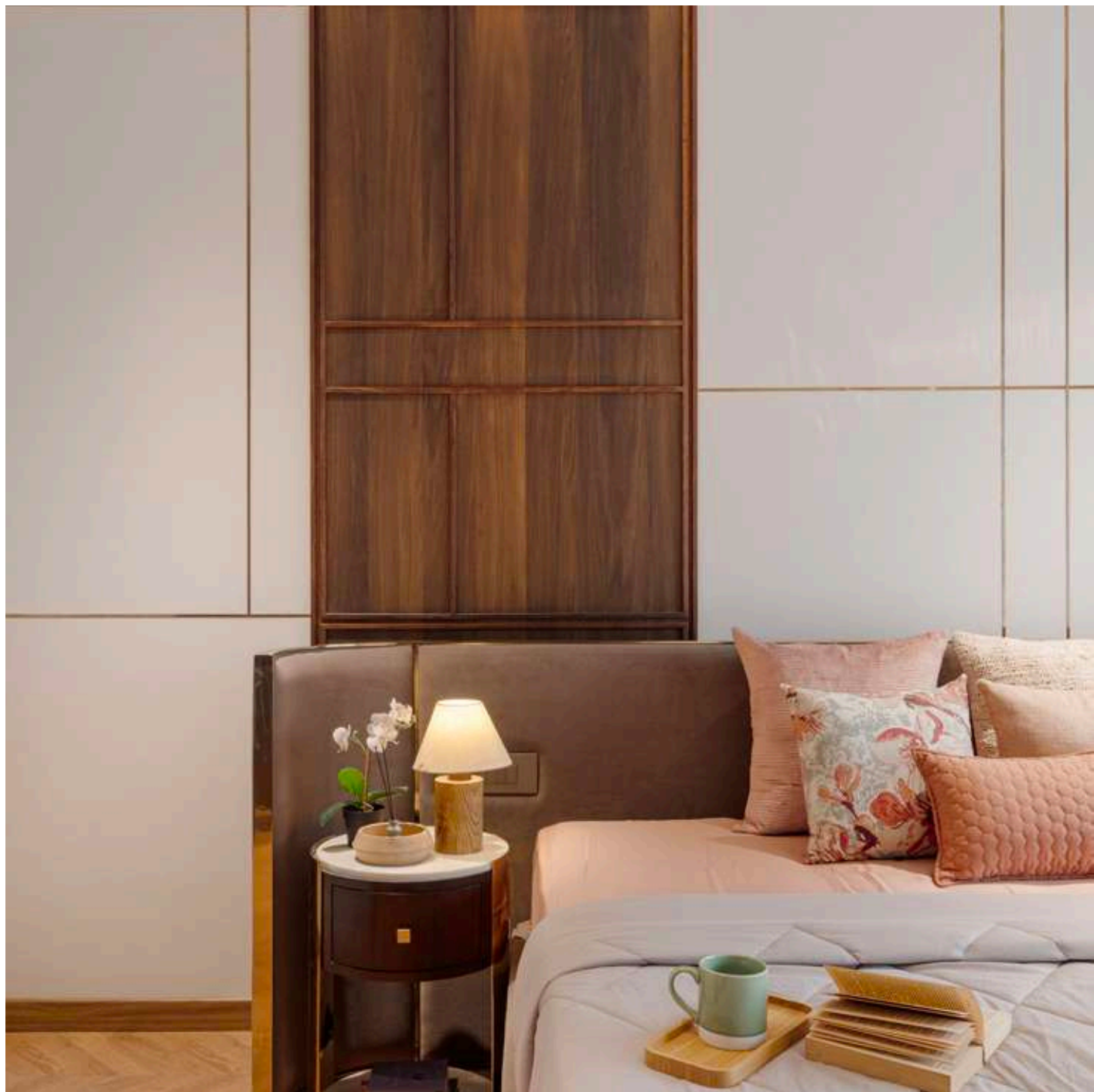


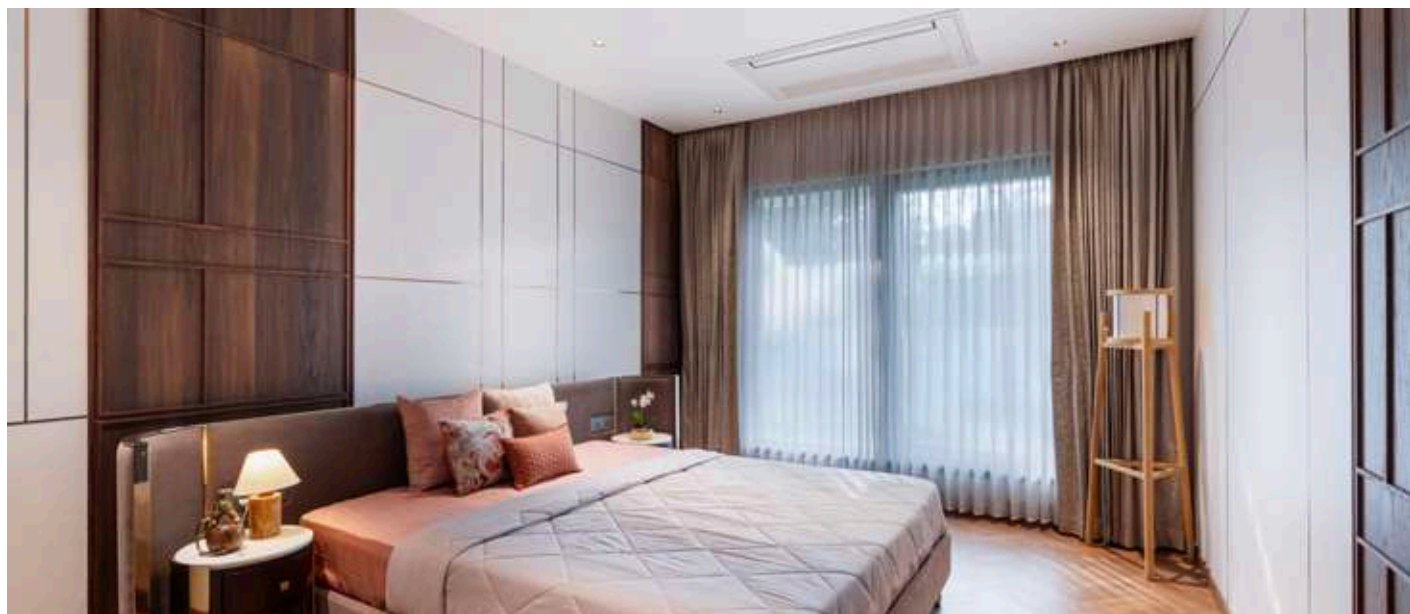
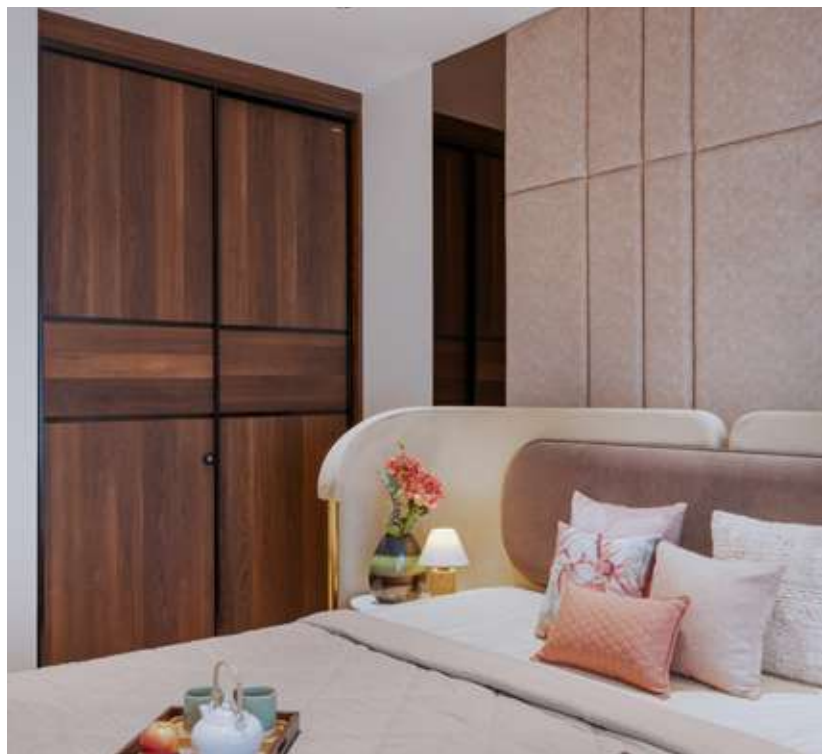












An engaging interior project of manufacture and execution distinguished by an exquisite selection of materials.

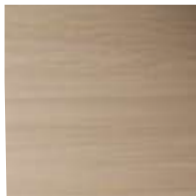
The choice of smoked oak veneer wall paneling against white walls is a brilliant contrast that promises to bring warmth and depth to the spaces. It adds a natural, earthy tone while the ceilings introduce a sense of sophistication and architectural detail. Integrated copper finished elements ties everything together with character and elegance.

Crafted from reclaimed solid teak, our bespoke doors with louvers showcase exceptional craftsmanship, making the process thoroughly enjoyable.

Material Palette



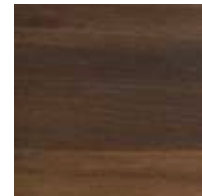
Smoked Oak



White Oak



Walnut Veneer



Smoked OAK
Veneer



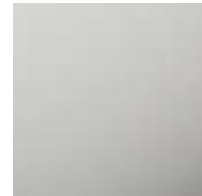
Brass strips



Teak Wood



Fluted glass



Marble







At ZARAVA, we embrace the idea of working as a team, using sustainable materials, earth friendly practices, along with the best local artisans and their expert craftsmanship. We recognize the vital importance of working with craft persons who understand, feel and communicate with clay in a way we could only dream of. Their inherent knowledge and respect for the earth, as a material and as a whole is a privilege we get to experience by working with our artisans, every single day. It is our hearts desire to craft products that are aesthetically pleasing, affordable, functional and durable, that are easy to use and are an increased value addition to your personal or professional space. Whether you're a home baker or an established restaurateur, a collector of coffee mugs or a ceramic enthusiast, we can assure we have something that catches your singularly unique taste.

info@zarava.in



QUICK RESPONSE





PROJECT 04

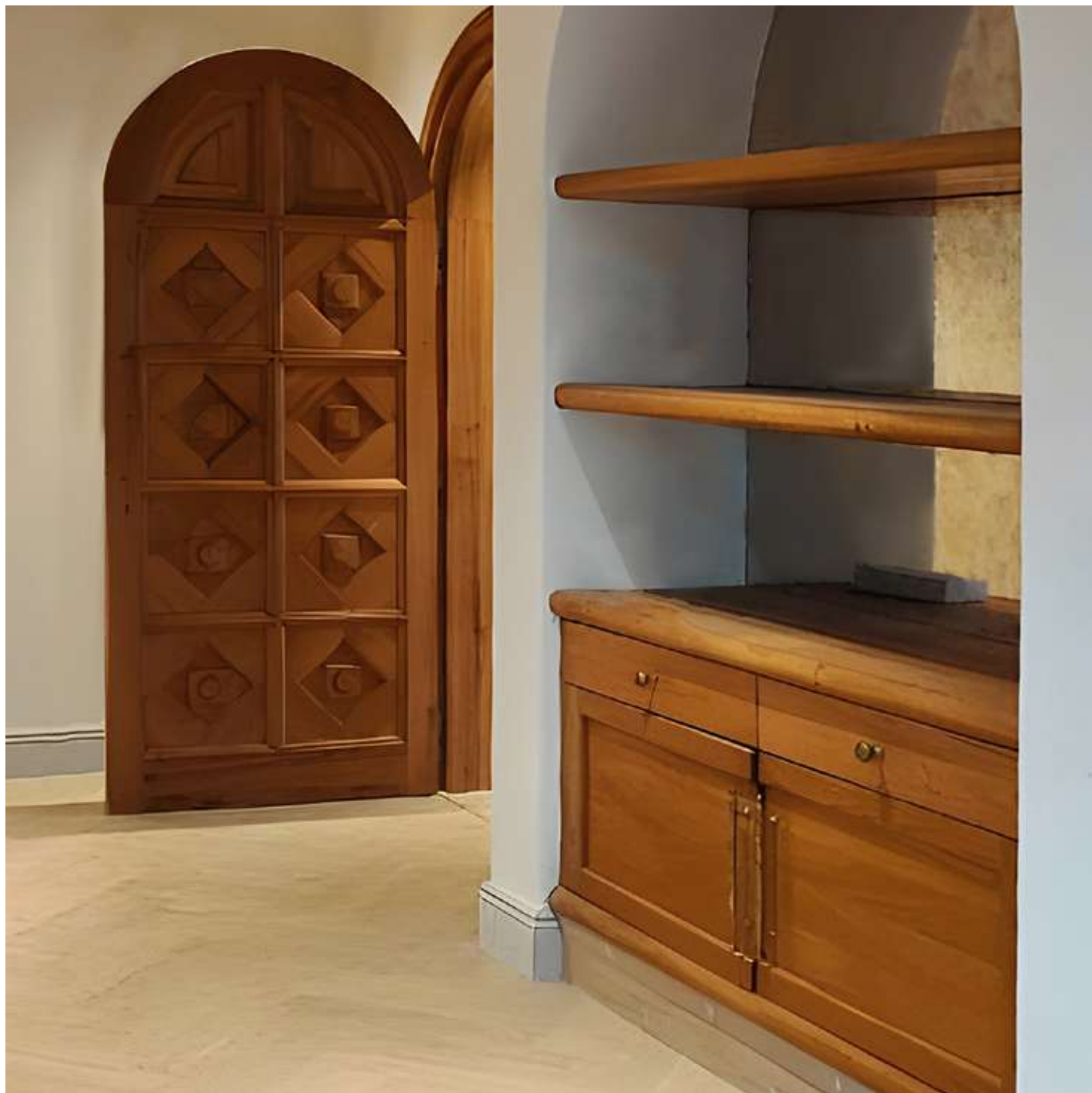
Villa at Verraton

Architect : Anthology
Client : Rashmi
Location : Mumbai
Project Typology : Residential interiors
Year : 2022-2023





































I am thrilled to share my wonderful experience with Bram and his team, whose craftsmanship brought my new interiors to life. Bram's meticulous attention to detail ensured that every piece they created was perfect, leaving me thoroughly satisfied with the results. From the outset, Bram and his team impressed us with their innovative design ideas and personalized approach. They took the time to understand our vision and offered valuable suggestions to improve and refine our concepts. Their expertise was particularly evident in the design of our custom furniture and railings, which seamlessly blend Indian craftsmanship with French elegance. Bram's ability to combine traditional techniques with modern aesthetics resulted in pieces that are not only functional but also works of art. The quality of the materials and the precision in their work were impeccable, resulting in beautiful and functional pieces that truly stand out. The team's professionalism, punctuality, and collaborative spirit made the entire process smooth and enjoyable. They were responsive to our feedback and flexible in accommodating any changes, ensuring that the final outcome perfectly matched our requirements. I would have no hesitation in recommending Bram Carpenters to anyone looking for top-notch carpentry services. Their creativity, expertise, and commitment to excellence make them the ideal choice for any project.

-Rashmi Wadke

Material Palette



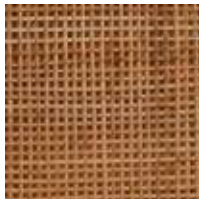
White Oak



Walnut Veneer



OAK Veneer



Cane

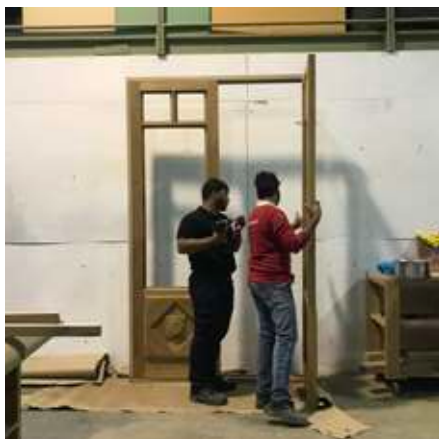
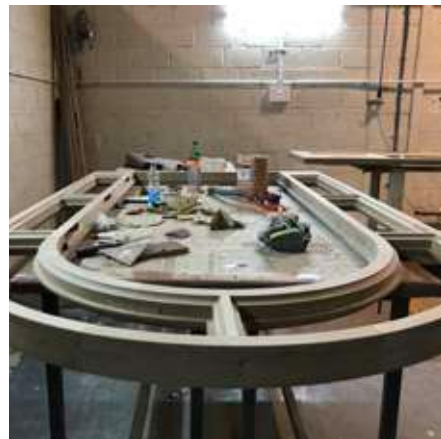


Fluted glass



Smoked Oak









COASTAL

EXTERNAL DOOR HANDLES & DOOR PULL HANDLES

Our wide range of external door handles and pulls are available in a range of finishes, from black antique stainless steel to contemporary brushed brass and chrome.

Browse the collection, including lever operated handles, bar pull handles, multipoint lock handles, sliding door handles and bifold door handles.

SCAN FOR MORE



FOLLOW & SHARE



We're Coastal, a group of friendly, helpful people based throughout the UK, working to create and distribute quality products our customers will love.

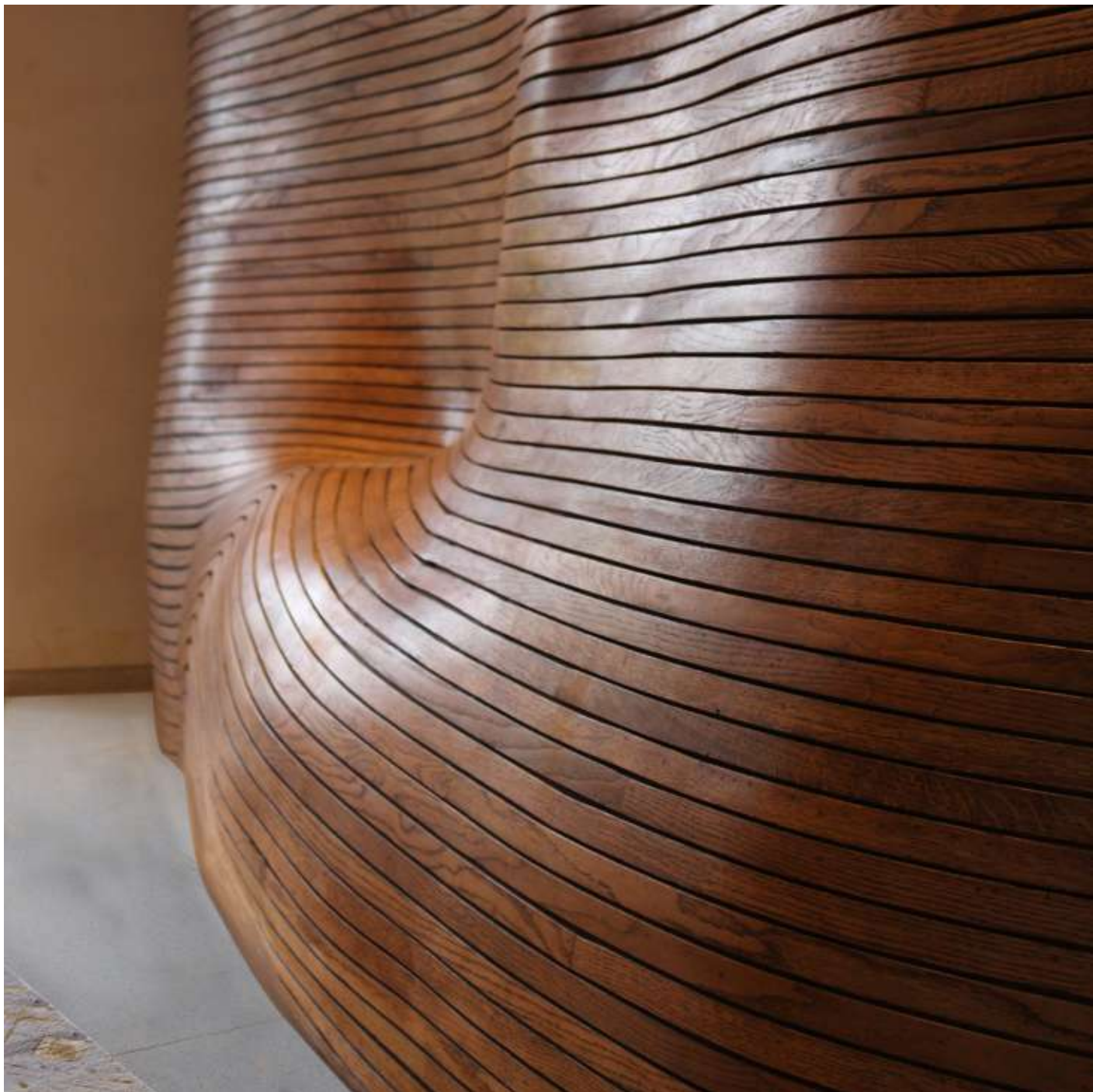


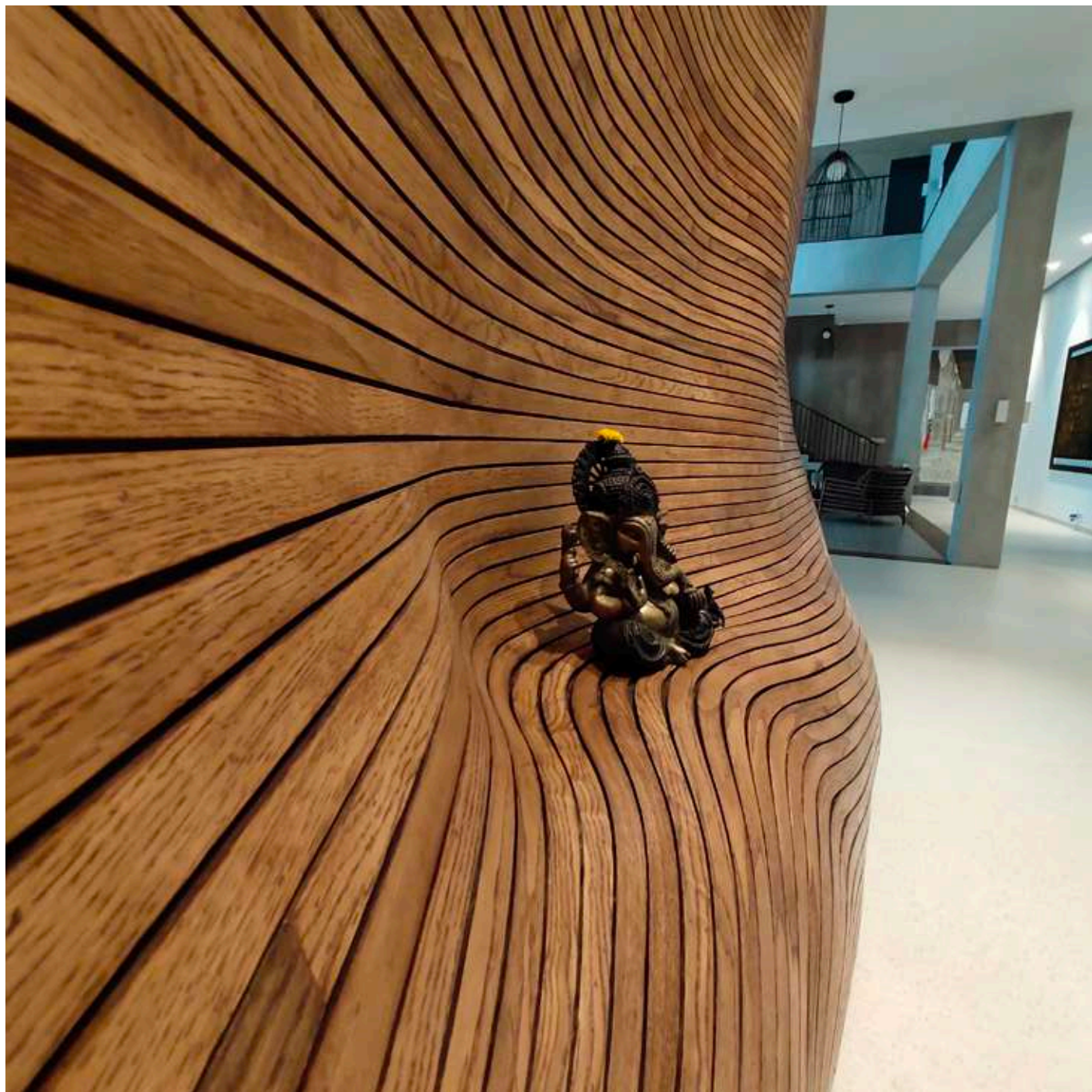
Other Projects



PARAMETRIC PARTITION WALL

Client : Reena
Location : Bangalore
Year : 2020







PRAYER ROOM DOOR

Client : Bharath
Location : Mysore
Year : 2020



FRENCH LOUIS XV MAIN DOOR

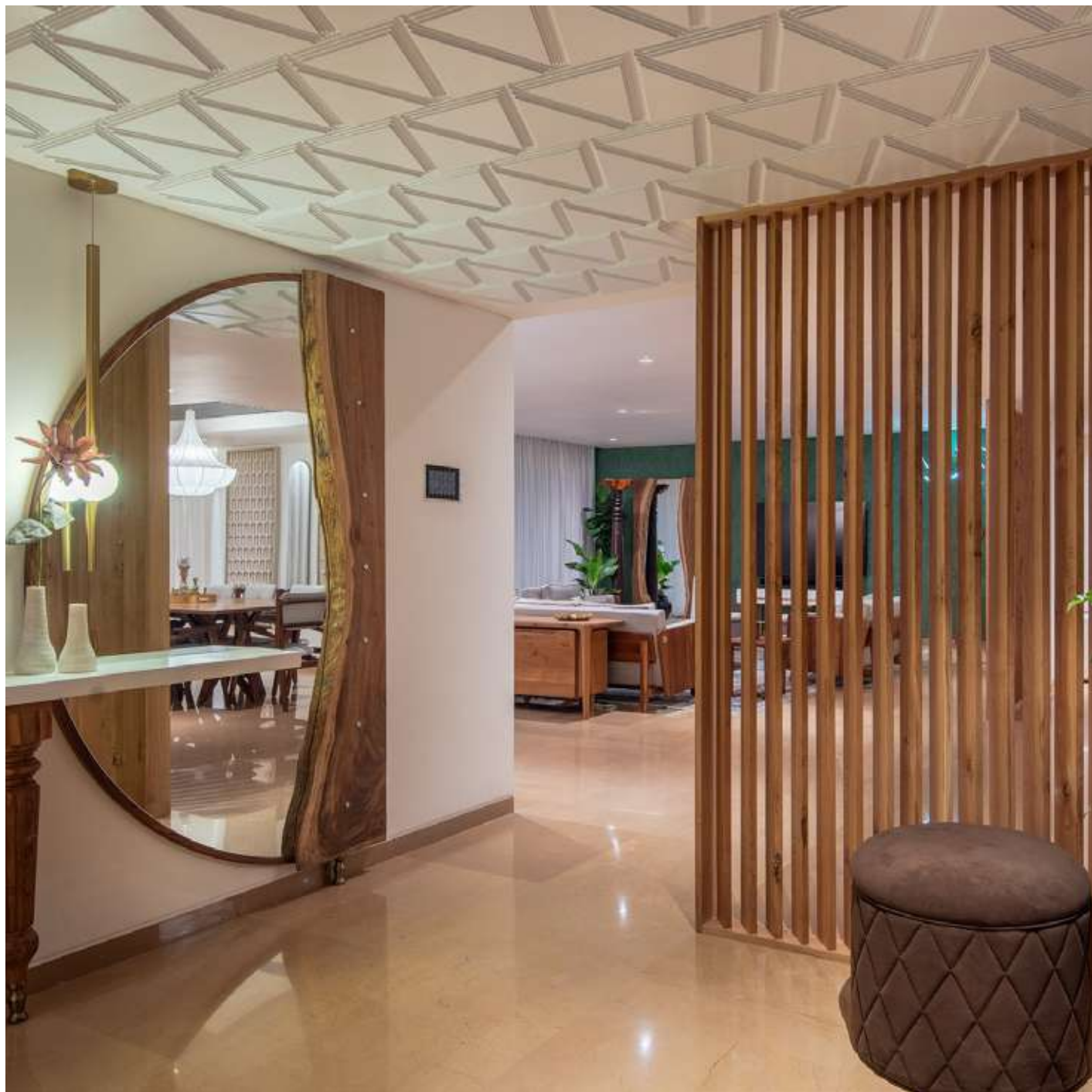
Client : Tritz
Location : Montpellier, France
Year : 2019

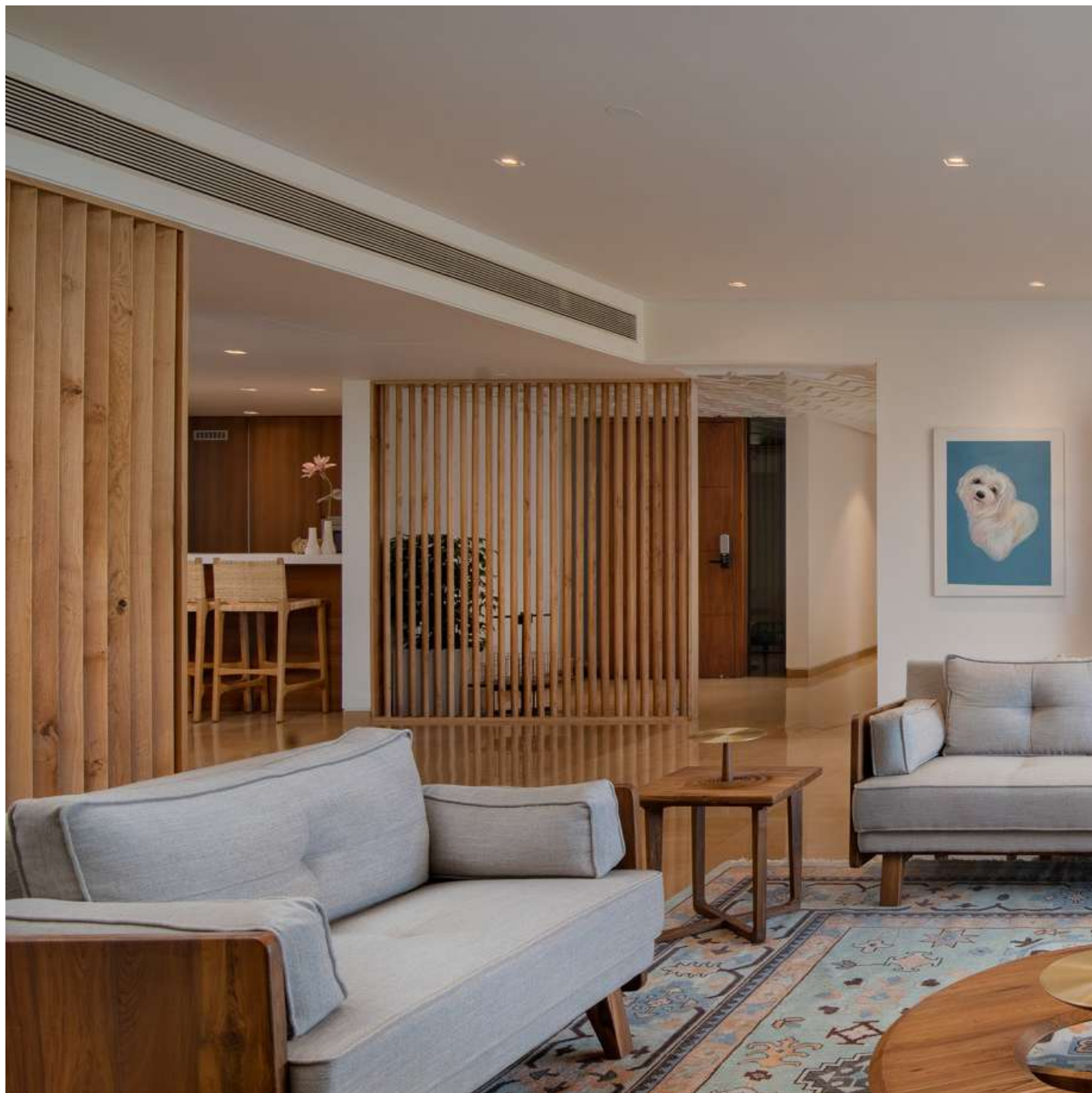


PARTITION & CEILING

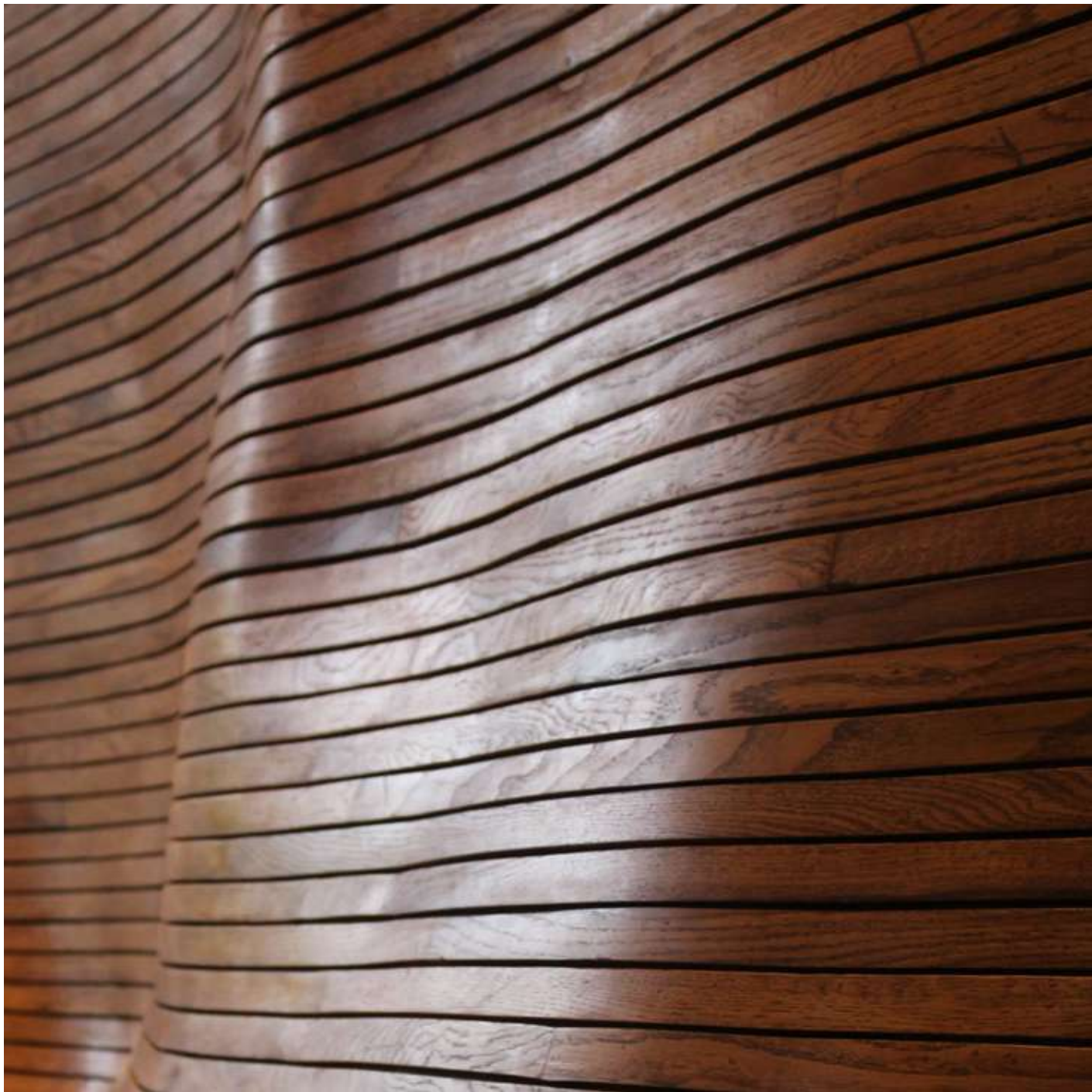
Client : Adarsh
Location : Pune
Year : 2022











SERVICES

Curation:

This is a collective thought process where we help our clients with our service to bring all their ideas together to curate a more meaningful and interesting space with all the furniture pieces and interiors.

Collaboration:

We collaborate with architects and interior designers through discussions, R&D, and prototypes to understand space, material, and functionality, creating a guiding language for the project.

Choices:

Some of the custom design ideas revolve around the material and demand a certain level of control.

We are able to meet this and make better choices with the raw materials, panel processing and the construction aspects which makes a significant difference in the final outcome of the project.



Every company should have a product that defines its ultimate craftsmanship.
A product that comes from a continuous search for perfection.
A product that amazes its competitors and changes their industry.
The kind of product that was manufactured and innovated with passion.
At the V Group, we manufacture such product.



SHABBIR VAGH

DIRECTOR



BRAM ROUWS

FOUNDER & DIRECTOR

In 2021, Bram Woodcrafting Studio joined the Vagh group of companies and has been in partnership with MAS Furniture since. This partnership expands the capabilities of BWS through the access it provides to the tools and services of all the companies in the Vagh group.

PARTNERS

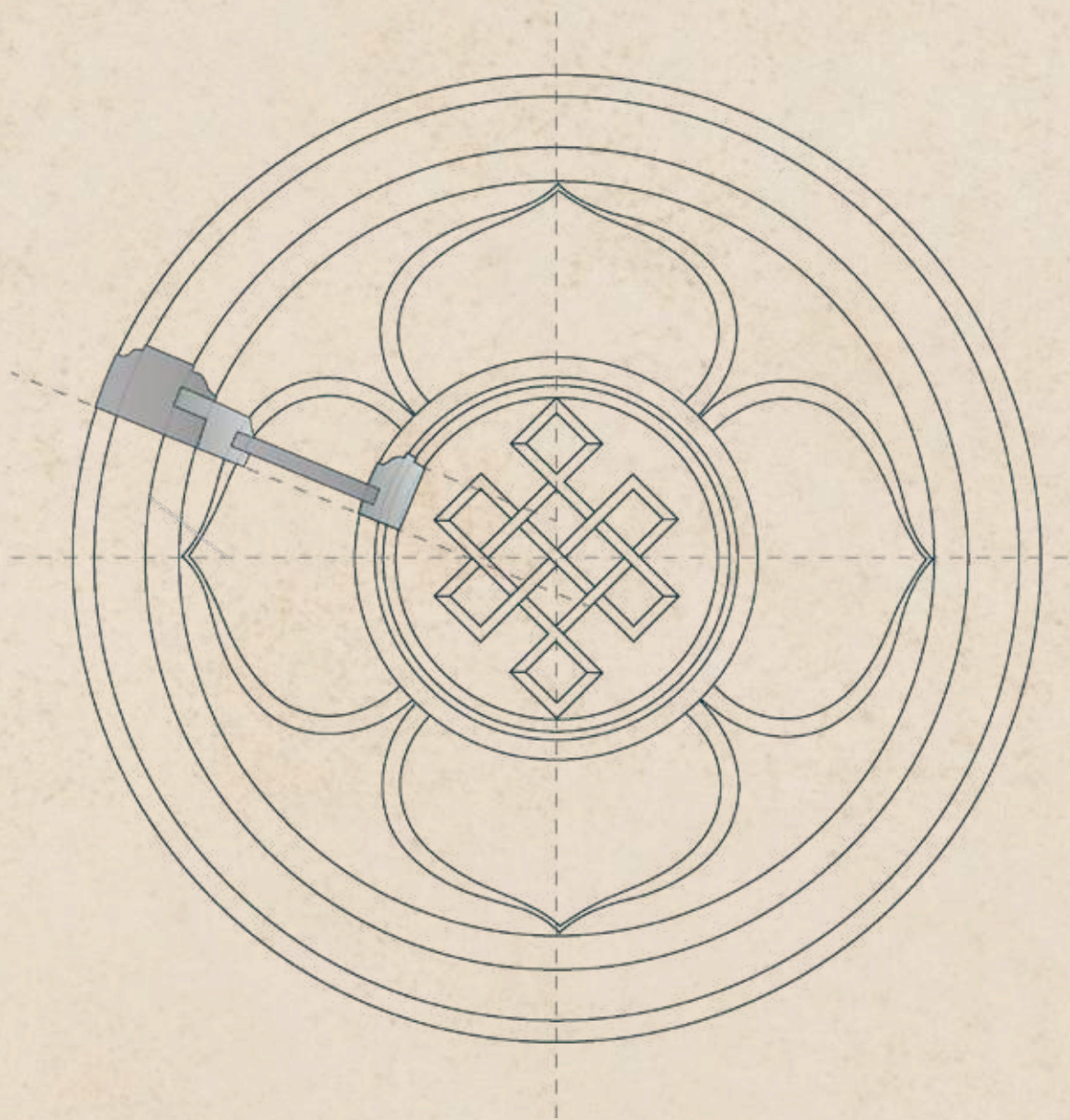


VENDORS





Bram Woodcrafting Studio 13/22, Mysuru - Hunsuru road, Belavadi,
Industrial area, Mysuru, 570018 | info@woodcraftingstudio.in | 8884455658





WOODCRAFTING . IN